

**EAGLE** 

The Way to Go

# PRODUCT CATALOGUE 2009





**For the family, weekend  
anglers or tournament pros,  
Eagle® makes successful  
fishing and GPS navigation  
simple for everyone. So make  
the most of your time on the  
water. For the reliable choice  
in quality, performance and  
value, Eagle® is the way to go.**





# Contents

NEW COMPACT ECHOSOUNDERS	
Cuda® .....	2
FishEasy® .....	4
Portables.....	6
FULL-SIZE ECHOSOUNDERS	
FishMark® 200 kHz.....	8
SeaFinder® 50/200 kHz.....	10
ECHOSOUNDER/GPS CHARTPLOTTERS	
FishElite® 200 kHz.....	12
SeaCharter® 50/200 kHz.....	14
GPS CHARTPLOTTER	
IntelliMap® .....	15
CARTOGRAPHY.....	16
HIGH-PERFORMANCE SKIMMER® TRANSDUCERS.....	
	20
SPECIFICATIONS.....	22
ABOUT NAVICO.....	24



# CUDA®

## Compact Echosounders



## NEW ITEMS FOR 2009!



### NEW COMPACT CHOICES

Whether you need the best value in fishfinding, an easy-to-use portable, or a compact echosounder with built-in GPS, Cuda® has the options covered.

#### NEW CUDA® 350i S/MAP WITH GPS COMPACT ECHOSOUNDER/MAPPING GPS



**Part Number 116-38**

##### ECHOSOUNDER

- 800 watts peak-to-peak/100 watts RMS with depths to 600'/183 m
- Compact 200 kHz Skimmer® transducer with built-in temp sensor and up to 60° of fish detection coverage

##### CHARTPLOTTER

- Space-saving case design with internal 12-parallel channel GPS antenna
- Built-in world background map
- Saves up to 1,000 waypoints and event markers each
- Up to 100 savable plot trails

##### PLUS

- 10 international languages
- Back-up memory
- Sealed and waterproof
- Full one-year warranty

#### NEW CUDA® 300 COMPACT ECHOSOUNDER



**Part Number 110-92**

Simple to use with excellent performance and resolution at a fantastic low price with the new, affordable Cuda® 300 fishfinder!

- Super sunlight-viewable 240Vx160H pixel 4"/10.2 cm Film SuperTwist LCD display
- 800 watts peak-to-peak/100 watts RMS
- High-speed 200 kHz Skimmer® transducer with built-in temp sensor and depths to 600'/183 m
- Hands-free ASP™ operation, GRAYLINE®, Advanced Fish I.D.™, FishTrack™
- Sealed and waterproof with full one-year warranty

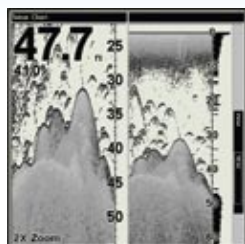


## EASY-TO-VIEW DATA



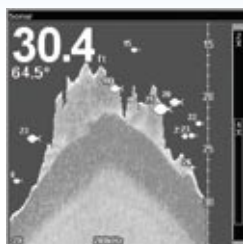
### ECHOSOUNDER

GRAYLINE® display enhances target separation and helps define bottom composition.



### SPLIT SCREEN

In split-screen echosounder mode, anglers can zoom in for a closer look at targets on one side, while monitoring the entire water column on the other side.



### NIGHT VIEWING

Night Viewing is one of the many echosounder display modes you can select for enhanced viewing to match conditions—from total darkness to the brightest sunlight.





# FISHEASY®

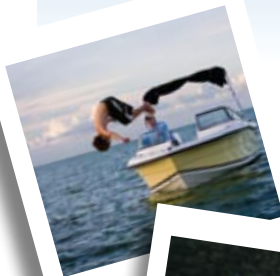
## Compact Echosounders



## NEW ITEM FOR 2009!

### PERFORMANCE AND VALUE

Don't settle for less in a compact echosounder unit. With new super-bright colour display and superb Dual-Search echosounder options, FishEasy® is a perfect choice for ease-of-use and reliability, in an affordable package.



### HOW DUAL-SEARCH WORKS

Going, wider, deeper and better, Eagle® FishEasy® 245 DS 83/200 kHz Dual-Search echosounder delivers excellent shallow and deepwater fishfinding coverage for angling success.

### NEW FISHEASY® 350C COLOUR 200 KHZ ECHOSOUNDER WITH BRIGHT NEW DISPLAY



#### Part Number 123-59

Astounding daylight colour and fishfinder performance in this incredibly affordable compact package exclusively from Eagle®!

- New, brighter 3.5"/8.9 cm diag. 320Vx240H pixel, 256-colour, active matrix TFT display is now even more viewable even in direct sunlight
- 200kHz Skimmer® transducer has built-in temp sensor and up to 60° of wider fish detection coverage
- COLORLINE™ feature improves target definition and defines bottom composition
- Adjustable ping speed and automatic HyperScroll™ features display fish targets at higher boat speeds
- High-speed screen updates
- Sealed and waterproof with mfrs. full one-year warranty

### FISHEASY® 245 DS DUAL-SEARCH ECHOSOUNDER



#### Part Number 110-69

#### DISPLAY

- High-detail 240V x 160H pixel 4"/10.2 cm diag. Film SuperTwist LCD display
- FishReveal™ and HyperScroll™
- ASP™
- Advanced Fish I.D.™ with FishTrack™

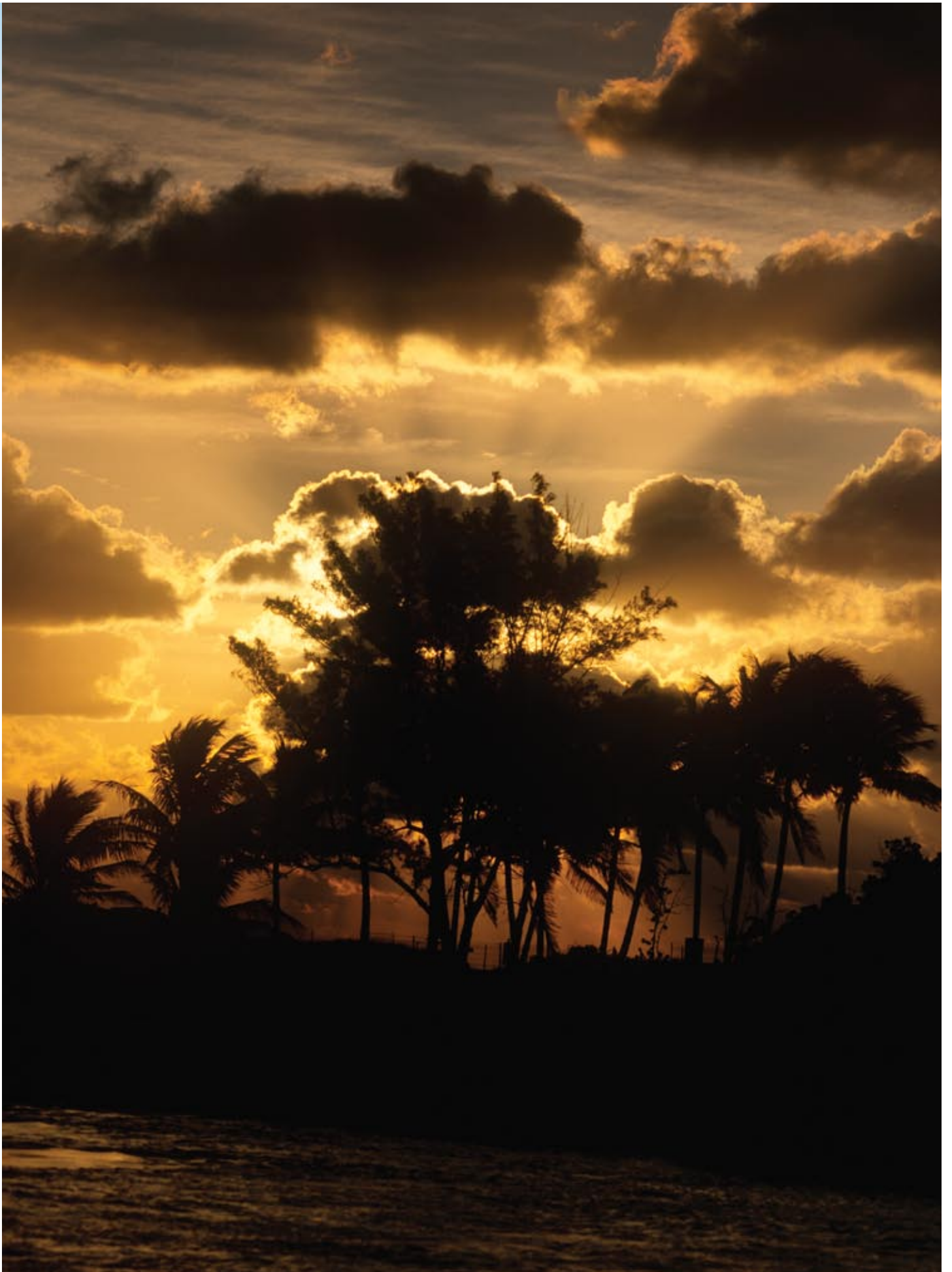
#### ECHOSOUNDER

- Dual 83/200 kHz sounding for superb target detail and separation from shallow water to 800'/244 m
- Compact Dual-Search Skimmer® transducer with dual beams producing up to 120° of fishfinding coverage
- Built-in temp sensor

#### PLUS

- High-speed screen updates and back-up memory
- 10 international languages
- Sealed and waterproof
- Full one-year warranty





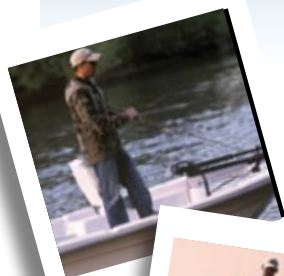


# PORTABLES

Echosounders



## NEW ITEMS FOR 2009!



### TAKE THEM ANYWHERE

With their long-lasting power packs, our Eagle® Portables will extend your time on the water, and without having to worry about wiring. Go ultra-compact or choose full-featured with this group of versatile fishfinders.

#### NEW CUDA® 300 PORTABLE\*



##### Part Number 110-93

Same as the new CUDA® 300 echosounder (page 2) in a handy portable.

Comes with Porta-Power Pack case and portable 200 kHz Skimmer® transducer with suction-cup mounting bracket (batteries not included).

#### NEW FISHEASY® 350c PORTABLE\*



##### Part Number 123-60

Same as the new colour FISHEASY® 350c echosounder (page 4) in a handy portable.

Comes with Porta-Power Pack case and portable 200 kHz Skimmer® transducer with suction-cup mounting bracket (batteries not included).

#### NEW FISHEASY® 245 DS PORTABLE\*



##### Part Number 110-81

Same as the FISHEASY® 245 DS echosounder (page 4) in a handy portable.

Comes with Porta-Power Pack case and portable compact Dual-Search Skimmer® transducer with suction-cup mounting bracket (batteries not included).



\*Actual depth capabilities depend on transducer configuration and installation, bottom composition and water conditions. All echosounder units typically read deeper in fresh water than salt water.

## FISHMARK® 320 PORTABLE



### Part Number 117-19

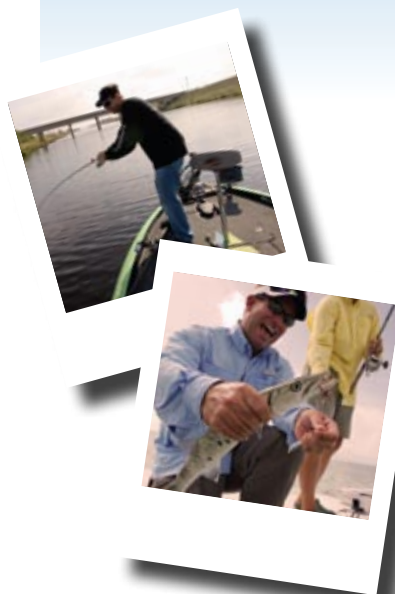
Same as the FISHMARK 320 echosounder (page 9) in a handy portable.

Comes with Porta-Power Pack case and portable 200 kHz Skimmer® transducer with suction-cup mounting bracket (batteries not included).





# ECHOSOUNDERS



## 200 KHZ FULLSIZE ECHOSOUNDER

Brilliant colour, a truly sunlight-viewable display, plus unbeatable performance and value makes the FishMark® 640c the best deal in fishfinding. And for an even more budget-conscious buyer who wants features and performance, our monochrome FishMark® models deliver all that and more, with a great look and compact price tag.

### FISHMARK® 640c COLOUR ECHOSOUNDER



#### Part Number 123-26

##### DISPLAY

- Special 5"/12.7 cm diag. colour-enhanced TFT display for maximum visibility and widest viewing angles even in bright sunlight
- 640V x 480H pixel resolution for superb echosounder target detail/separation
- Advanced fluorescent cold-cathode screen and keypad backlighting
- High-speed screen updates
- Split-screen data/echosounder graph display feature
- Overlay Data feature to place any echosounder data on any full- or split-screen display

##### ECHOSOUNDER

- 1,500 watts peak-to-peak/188 watts RMS, depths to 800'/244 m
- Includes high-speed, transom-mount 200 kHz Skimmer® transducer with

built-in temp sensor and up to 60° of fish detection coverage

- Adjustable Ping Speed with automatic HyperScroll™ for high-speed sounding
- COLORLINE™ to enhance target separation and help define bottom composition
- Multiple colour echosounder display modes for angler preference, light conditions, and expose fish hidden in cover
- FasTrack™ vertical bar flasher shows real-time echosounder returns and echo strength

##### PLUS

- Internal back-up memory for key echosounder settings
- Completely sealed and waterproof
- Full one-year warranty

### FISHMARK® 480 MONOCHROME ECHOSOUNDER



#### Part Number 117-09

All the great FishMark® echosounder features, with high-detail, 480V x 480H pixel, 5"/12.7 cm monochrome display with 16-level grayscale definition and GRAYLINE®.



## HOW ECHOSOUNDER WORKS

Echosounder was developed as a means of tracking enemy submarines during World War II. An echosounder consists of a transmitter, transducer, receiver, and display.

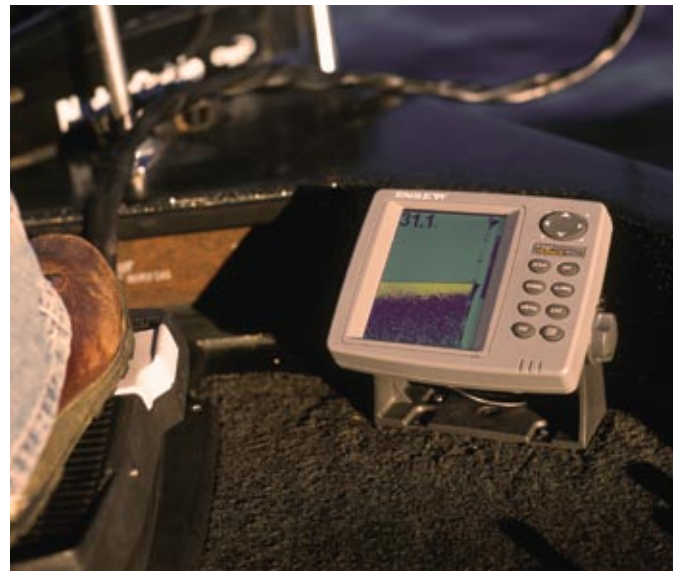
In the simplest terms, an electrical impulse from a transmitter is converted into a sound wave by the transducer and sent into the water. When this wave strikes an object, it rebounds. This echo strikes the transducer, which converts it back into an electric signal, which is amplified by the receiver and sent to the display. Since the speed of sound in water is constant (approximately 4800 feet per second), the time lapse between the transmitted signal and the received echo can be measured and the distance to the object determined. This process repeats itself many times per second.

### FISHMARK® 320 MONOCHROME ECHOSOUNDER



#### Part Number 111-70

Same great FishMark® echosounder features, with 320V x 320H pixel, 5"/12.7 cm diag. monochrome display with 16-level grayscale definition and GRAYLINE®.





# ECHOSOUNDERS



## DUAL-FREQUENCY DEDICATED ECHOSOUNDER

Powerful, full-featured 50/200 kHz SeaFinder® echosounder performance and value for fishing deeper waters without digging deep into your pocket. Use 200kHz in shallow waters for increased definition, and switch to 50kHz for better deep-water performance.

### SEAFINDER® 640 DF COLOUR ECHOSOUNDER



#### Part Number 123-27

##### DISPLAY

- Sunlight-readable 5"/12.7 cm diag., 640V x 480H pixel, high-resolution colour TFT display
- Temp/speed/distance displays
- High-speed screen updates
- Overlay Data feature to place any echosounder data on any full- or split-screen display

##### ECHOSOUNDER

- 500 watts RMS/4,000 watts peak-to-peak, depths to 1,500'/457 m with 50 kHz
- Includes high-speed, transom-mount 50/200 kHz Skimmer® transducer with built-in temp sensor
- Adjustable Ping Speed with automatic HyperScroll™ for high-speed sounding

- COLORLINE™ to enhance target separation and help define bottom composition
- Multiple colour echosounder display modes for angler preference, light conditions, and expose fish hidden in cover
- FasTrack™ vertical bar flasher shows real-time echosounder returns and echo strength

##### PLUS

- Internal back-up memory for key echosounder settings
- Completely sealed and waterproof
- Full one-year warranty

### SEAFINDER® 480c DF



#### Part Number 117-05

All the great SeaFinder® dual-frequency echosounder features, with high-detail, 480V x 480H pixel, 16-level grayscale monochrome display with GRAYLINE®.

\*Actual depth capabilities depend on transducer configuration and installation, bottom composition and water conditions. All echosounder units typically read deeper in fresh water than salt water.



## DUAL-FREQUENCY BENEFITS

Eagle® 50/200 kHz echosounder is the choice for fishing deeper waters of inshore coastal areas. The long wavelength of the lower 50 kHz frequency allows the echosounder sound wave to penetrate deeper which makes it ideal for salt water and fresh water downrigger tracking.





# 200 KHZ ECHOSOUNDER/ GPS CHARTPLOTTERS



## ECHOSOUNDERS/GPS CHARTPLOTTERS WITH INTERNAL AND EXTERNAL ANTENNAS

The versatility and utility of a recording echo-sounder/chartplotter combo, with an exclusive sunlight-viewable, super-high-resolution display, with your choice of internal or external antenna!

### FISHELITE® 642c iGPS COLOUR ECHOSOUNDER/GPS CHARTPLOTTER – INTERNAL GPS ANTENNA



Part Number 116-18

#### DISPLAY

- Special 5"/12.7 cm diag. 256-colour enhanced TFT display for maximum visibility and widest viewing angles even in bright sunlight
- 640V x 480H pixel resolution for superb echosounder target detail/separation and exceptional chart definition
- High-speed screen updates
- Unique Resize Window to adjust split-screen display, and Overlay Data feature to place any echosounder/GPS data on any full- or split-screen display

#### ECHOSOUNDER

- 1,500 watts peak-to-peak/188 watts RMS, depths to 800'/244 m
- Includes high-speed, transom-mount 200 kHz Skimmer® transducer with built-in temp sensor and up to 60° of fish-detection coverage

- Adjustable Ping Speed with automatic HyperScroll™ for high-speed sounding
- COLORLINE™ to enhance target separation and help define bottom composition
- Multiple colour echosounder display modes for angler preference, light conditions, and expose fish hidden in cover
- FasTrack™ vertical bar flasher shows real-time echosounder returns and echo strength

#### RECORDING

- Waterproof slot for one MMC/SD memory card (not included) to record echosounder graphs and GPS data files, and to load high-detail electronic options for nav display
- Compatible with plug-and-play Lowrance NauticPath™ International and Navionics® electronic charts

#### CHARTPLOTTER

- Built-in antenna with 12-parallel channel GPS precision for location accuracy
- Enhanced built-in world background map.
- Stores up to 1,000 waypoints, 1,000 event markers, 100 routes (up to 100 waypoints/route)
- Up to 100 retraceable plot trails, up to 10,000 points in any trail
- 42 graphic icons to mark key spots



## HOW IT WORKS: GPS

GPS, short for Global Positioning System, is a navigation system that enables you to calculate your location utilizing medium-orbit Earth satellites. GPS receivers tune into microwave signals transmitted by these satellites.

### New! EGC-16W External Antenna

16-parallel channel GPS reception with fast, strong satellite lock-ons, precise tracking, and position updates every second with the external EGC-16W receiver.

External EGC-16W

**Available on models:**

**117-10, 123-28**



## FISHELITE® 640c COLOUR ECHOSOUNDER/GPS CHART-PLOTTER – EXTERNAL 16-CHANNEL GPS ANTENNA



**Part Number 123-28**

### DISPLAY

- Special 5"/12.7 cm diag. 256-colour enhanced TFT display for maximum visibility and widest viewing angles even in bright sunlight
- 640V x 480H pixel resolution for superb echosounder target detail/separation and exceptional chart definition
- High-speed screen updates
- Unique Resize Window to adjust split-screen display, and Overlay Data feature to place any echosounder/GPS data on any full- or split-screen display

### ECHOSOUNDER

- 1,500 watts peak-to-peak/188 watts RMS, depths to 800'/244 m
- Includes high-speed, transom-mount 200 kHz Skimmer® transducer with built-in temp sensor and up to 60° of fish-detection coverage
- Adjustable Ping Speed with automatic HyperScroll™ for high-speed sounding
- COLORLINE™ to enhance target separation and help define bottom composition

- Multiple colour echosounder display modes for angler preference, light conditions, and expose fish hidden in cover
- FasTrack™ vertical bar flasher shows real-time echosounder returns and echo strength

### RECORDING

- Waterproof slot for one MMC/SD memory card (not included) to record echosounder graphs and GPS data files, and to load high-detail electronic options for nav display
- Compatible with plug-and-play Lowrance NauticPath™ International and Navionics® electronic charts

### CHARTPLOTTER

- External antenna with 16-parallel channel GPS precision for location accuracy
- Enhanced built-in world background map
- Stores up to 1,000 waypoints, 1,000 event markers, 100 routes (up to 100 waypoints/route)
- Up to 100 retraceable plot trails, up to 10,000 points in any trail
- 42 graphic icons to mark key spots

## FISHELITE® 480 MONO-CHROME ECHOSOUNDER



**Part Number 117-10**

All the same FishElite® echosounder/navigation/recording features, with high-detail, 480V x 480H pixel, 5"/12.7 cm diag. monochrome display with 16-level grayscale definition.



# 50/200 KHZ ECHOSOUNDER/ GPS CHARTPLOTTER



## DUAL-FREQUENCY COLOUR ECHOSOUNDER/ GPS CHARTPLOTTER

A powerful value in a dual-frequency sounder/  
GPS chartplotter combo—with memory card ver-  
satility—featuring an exclusive sunlight-viewable  
display, plus an internal GPS antenna. A conven-  
ient space-saving and money-saving package  
for vertical mounting on open cockpit boats.

## SEACHARTER® 642c iGPS COLOUR ECHOSOUNDER/GPS CHARTPLOTTER – INTERNAL GPS ANTENNA



Part Number 116-19

### DISPLAY

- Special 5"/12.7 cm TFT display for maximum visibility and widest viewing angles even in bright sunlight
- 640V x 480H pixel resolution for echosounder target detail/separation and exceptional chart definition
- Temp/speed/distance displays
- High-speed screen updates
- Unique Resize Window to adjust split-screen display, and Overlay Data feature to place any echosounder/GPS data on any full- or split-screen display

### ECHOSOUNDER

- 500 watts RMS/4,000 watts peak-to-peak, depths to 1,500'/457 m with 50 kHz
- Includes high-speed, transom-mount 50/200 kHz Skimmer® transducer with built-in temp sensor
- Adjustable Ping Speed with automatic

- HyperScroll™ for high-speed sounding
- COLORLINE™ to enhance target separation and help define bottom composition
- Multiple colour echosounder display modes for angler preference, light conditions, and expose fish hidden in cover
- FasTrack™ vertical bar flasher shows real-time echosounder returns and echo strength

### RECORDING

- Waterproof slot for one MMC/SD memory card (not included) to record echosounder graphs and GPS data files, and to load high-detail electronic options for nav display
- Compatible with plug-and-play Lowrance NauticPath™ International and Navionics® electronic charts

### CHARTPLOTTER

- Built-in antenna with 12-parallel channel GPS precision for location accuracy
- Enhanced built-in world background map
- Stores up to 1,000 waypoints, 1,000 event markers, 100 routes (up to 100 waypoints/route)
- Up to 100 retraceable plot trails, up to 10,000 points in any trail
- 42 graphic icons to mark key spots



# GPS CHARTPLOTTER



## INTELLIMAP® 642c iGPS COLOUR CHARTPLOTTER – INTERNAL GPS ANTENNA



Part Number 116-21

### DISPLAY

- Special 5"/12.7 cm diag., 256-colour, enhanced TFT display for maximum visibility and widest viewing angles even in bright sunlight
- 640V x 480H pixel resolution for exceptional chart definition
- Advanced fluorescent cold-cathode screen and keypad backlighting
- High-speed screen updates
- Unique Resize Window to adjust split-screen display, and Overlay Data feature to place any GPS data on any full- or split-screen display

### RECORDING

- Waterproof slot for one MMC/SD memory card (not included) to record GPS data files, and to load high-detail electronic options for nav display
- Compatible with plug-and-play Lowrance NauticPath™ International and Navionics® electronic charts

### CHARTPLOTTER

- Built-in antenna with 12-parallel channel GPS precision for location accuracy

- Enhanced built-in world background map
- Stores up to 1,000 waypoints, 1,000 event markers, 100 routes (up to 100 waypoints/route)
- Up to 100 retraceable plot trails, up to 10,000 points in any trail
- 42 graphic icons to mark key spots

## EASY-TO-VIEW DATA



### ECHOSOUNDER

COLORLINE™ display enhances target separation and helps define bottom composition. (Monochrome ecosounders feature GRAYLINE®)



### SPLIT SCREEN

Unique Resize Window to adjust split-screen display, and Overlay Data feature to place any echosounder/GPS data on any full- or split-screen display.



### GPS

Enhanced built-in world background map



### NIGHT VIEWING

Multiple colour echosounder display modes for angler preference, light conditions, and expose fish hidden in cover.



# CARTOGRAPHY









# CARTOGRAPHY

## ENJOY EXCELLENT COVERAGE

Choices and value in plug-and-play cartography on memory cards for navigating land or water. Simply insert into your compatible Eagle® GPS, and you're ready to go—with the greatest of detail, affordability and ease.

### Lowrance NauticPath™ International



When going global, you can experience the same high-level NauticPath™ offshore/coastal navigational electronic chart detail and information, with worldwide coverage choices. Each NauticPath™ International choice is preloaded on a SD memory card for plug-and-play convenience with your compatible Lowrance GPS.

For exhibits on individual chartcard coverage areas, visit the Mapping area of the Lowrance website.

NP-Caribbean

NP-Central America/West

NP-South America

NP-Europe West

NP-Europe North

NP-Mediterranean

NP-Africa/MiddleEast/India

NP-SEAsia/PacificIsland

NP-Australia/NewZealand

NP-Japan/East Asia

### Navionics Gold



Navionics is one of the world's largest and most experienced producers of charts. Navionics electronic charts provide more information than paper charts and provide it on easy-to-use plug & play cartridges. Navionics charts are now a fundamental tool of navigation, featuring water depths, nav aids, obstructions, and other information necessary for safe navigation.

Supplied on an SD card that fits simply and neatly into the waterproof draw, the all new Navionics XL3 & XL9 cartography gives amazing coverage, detailed charts similar in appearance to paper charts.



### NauticPath™

Detailed Lowrance cartography on optional SD cards



### Navionics Gold

Detailed Marine cartography on optional SD card



### Freedom Maps

Detailed roads, rivers available on optional SD card



### Memory Map

Upload waypoints, routes to GPS & download tracks to PC to review where you've been via SD card.



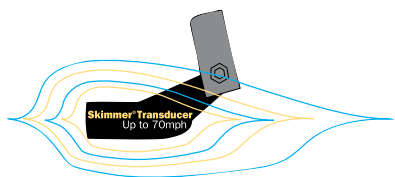






# HIGH-PERFORMANCE SKIMMER® TRANSDUCERS

Popular, proven, and so good, they're patented. High-speed Skimmer® transducers feature a unique hydro-dynamic design for the smoothest flow through water without echosounder-interfering bubbles.



## TRANSDUCER BENEFITS

Enjoy the best sounding performance and cleanest echosounder readings, even at boat speeds up to 70 mph / 61 kts (with fixed transom-mount models). Perfect for all boats – including aluminum and steel hulls.

### FEATURES

- Easy to install
- Built-in sensor for water surface temp
- Special "kick-up" bracket to help prevent accidental strike damage

#### 50/200 kHz Skimmer® Transom-Mount



Specially designed for salt water or downrigger tracking with built-in temp sensor, and up to 90° of effective fish detection coverage with 50 kHz – and up to 40° with 200 kHz – using high echosounder sensitivity settings. Not for shoot-thru-hull installation



#### 200 kHz Skimmer® Transom-Mount



Perfect for inland freshwater and shallower in-shore coastal saltwater fishfinding with up to 60° of effective fish detection coverage when using high sensitivity settings. All 200 kHz Skimmer® transducers included with Eagle® echosounder and combo echosounder/GPS models for 2006 feature a built-in sensor for water surface temp readings. Can also be used for shoot-thru sounding on solid fiberglass hulls with proper installation.

#### 200 kHz Skimmer® Portable



Great for smooth-flowing, high performance, go-anywhere fishfinding portability. Features a special suction cup bracket for easy mounting and placement, and still delivers up to 60° of wide fish detection coverage using high sensitivity settings, and built-in temp sensor. Not for high-speed use.

#### Versatile-Mount 200 kHz Pod Transducers



Super underwater coverage with the flexibility of trolling motor mount, or shoot-thru installation on solid fiberglass hulls. Available with or without built-in temp sensor, all offer a wider fish detection coverage area with high echosounder sensitivity settings.



# Specifications

## Cuda® Echosounder

Model	Transducer Frequency (kHz)	Display Features	Resolution (V x H, pixels)	Case Size (H x W x D)	Backlighting Feature	Depth Capability	Transmit Power (watts/RMS)
Cuda® 350 S/MAP Compact	200	10.2 cm, 16-level Grayscale	240 x 160	14.7 x 10.8 x 6.4 cm	White LED	Up to 183 m	800/100
Cuda® 300 Compact Echosounder	200	10.2 cm, 4-level Grayscale	240 x 160	14.7 x 10.8 x 6.4 cm	Incandescent	Up to 183 m	800/100
Cuda® 300 Portable	200	10.2 cm, 4-level Grayscale	240 x 160	14.7 x 10.8 x 6.4 cm	Incandescent	Up to 183 m	800/100

## FishEasy® Echosounder

Model	Transducer Frequency (kHz)	Display Features	Resolution (V x H, pixels)	Case Size (H x W x D)	Backlighting Feature	Depth Capability	Transmit Power (watts/RMS)
FishEasy® 350c	200	8.9 cm, 256-colour	320 x 240	14.7 x 10.8 x 6.4 cm	White LED	Up to 183 m	800/100
FishEasy® 350c Portable	200	8.9 cm, 256-colour	320 x 240	14.7 x 10.8 x 6.4 cm	White LED	Up to 183 m	800/100
FishEasy® 245 DS	83/200	10.2 cm, 4-level Grayscale	240 x 160	14.7 x 10.8 x 6.4 cm	Incandescent	Up to 305 m	1,500/188
FishEasy® 245 DS Portable	83/200	10.2 cm, 4-level Grayscale	240 x 160	14.7 x 10.8 x 6.4 cm	Incandescent	Up to 305 m	1,500/188

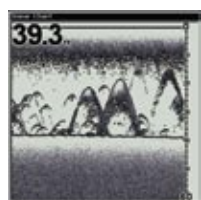
## FishMark® Echosounder

Model	Transducer Frequency (kHz)	Display Features	Resolution (V x H, pixels)	Case Size (H x W x D)	Backlighting Feature	Depth Capability	Transmit Power (watts/RMS)
FishMark® 640c	200	12.7 cm, 256-colour	640 x 480	13.8 x 17.6 x 8.6 cm	Fluorescent	Up to 244 m	1,500/188
FishMark® 480	200	12.7 cm, 16-level Grayscale	480 x 480	13.8 x 17.6 x 8.6 cm	Amber LED	Up to 244 m	1,500/188
FishMark® 320	200	12.7 cm, 16-level Grayscale	320 x 320	13.8 x 17.6 x 8.6 cm	Incandescent	Up to 244 m	1,500/188
FishMark® 320 Portable	200	12.7 cm, 16-level Grayscale	320 x 320	13.8 x 17.6 x 8.6 cm	Incandescent	Up to 244 m	1,500/188

## SeaFinder® Dual Frequency Echosounder

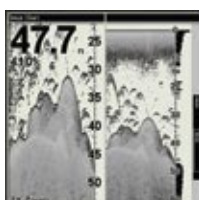
Model	Transducer Frequency (kHz)	Display Features	Resolution (V x H, pixels)	Case Size (H x W x D)	Backlighting Feature	Depth Capability	Transmit Power (watts/RMS)
SeaFinder® 640c DF	50/200	12.7 cm, 256-colour	640 x 480	13.8 x 17.6 x 8.6 cm	Fluorescent	Up to 457 m	4,000/500
SeaFinder® 500c DF	50/200	12.7 cm, 256-colour	320 x 240	13.8 x 17.6 x 8.6 cm	Fluorescent	Up to 457 m	4,000/500
SeaFinder® 480 DF	50/200	12.7 cm, 16-level Grayscale	480 x 480	13.8 x 17.6 x 8.6 cm	Amber LED	Up to 457 m	4,000/500

## Easy-To-View Data



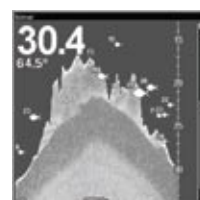
### ECHOSOUNDER

GRAYLINE® display enhances target separation and helps define bottom composition.



### SPLIT SCREEN

In split-screen echosounder mode, anglers can zoom in for a closer look at targets on one side, while monitoring the entire water column on the other side.



### NIGHT VIEWING

Night Viewing is one of the many echosounder display modes you can select for enhanced viewing to match conditions—from total darkness to the brightest sunlight.



## FishElite® Echosounder/GPS Chartplotters

Model	Transducer Frequency (kHz)	Display Features	Resolution (V x H, pixels)	Case Size (H x W x D)	GPS Antenna	Backlighting Feature	Depth Capability	Transmit Power (watts/RMS)
FishElite® 642c iGPS	200	12.7 cm, 256-colour	640 x 480	13.8 x 17.6 x 8.6 cm	Internal	Fluorescent	Up to 244 m	1,500/188
FishElite® 640c	200	12.7 cm, 256-colour	640 x 480	13.8 x 17.6 x 8.6 cm	External	Fluorescent	Up to 244 m	1,500/188
FishElite® 480	200	12.7 cm, 16-level Grayscale	480 x 480	13.8 x 17.6 x 8.6 cm	External	Amber LED	Up to 244 m	1,500/188

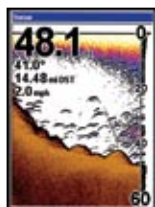
## SeaCharter® Echosounder/GPS Chartplotters

Model	Transducer Frequency (kHz)	Display Features	Resolution (V x H, pixels)	Case Size (H x W x D)	GPS Antenna	Backlighting Feature	Depth Capability	Transmit Power (watts/RMS)
SeaCharter® 642c DF iGPS	50/200	12.7 cm, 256-colour	640 x 480	13.8 x 17.6 x 8.6 cm	Internal	Fluorescent	Up to 457 m	4,000/500

## IntelliMap® Fullsize 5" GPS Marine Chartplotter

Model	GPS Antenna	Display Features	Resolution (V x H, pixels)	Case Size (H x W x D)	Backlighting Feature	Zoom Ranges (miles)
IntelliMap® 642c iGPS	Internal GPS+WAAS	12.7 cm, 256-colour	640 x 480	13.8 x 17.6 x 8.6 cm	Fluorescent	40 (0.02-4,000)

## Easy-To-View Data



**ECHO-SOUNDER**  
**COLORLINE™**  
display enhances target separation and helps define bottom composition. (Monochrome echo-sounders feature GRAYLINE®)



**SPLIT SCREEN**  
Unique Resize Window to adjust split-screen display, and Overlay Data feature to place any echo-sounder/GPS data on any full- or split-screen display.



**GPS**  
Enhanced built-in world background map



**NIGHT VIEWING**  
Multiple colour echosounder display modes for angler preference, light conditions, and expose fish hidden in cover.



## About Navico

Navico is the parent company to five leading marine electronics brands: B&G®, Eagle®, Lowrance®, Northstar and Simrad®. Navico has approximately 2,500 employees globally and is headquartered in Oslo, Norway. The company has development and manufacturing facilities in the USA, Mexico, the UK, Norway and New Zealand.

[www.navico.com](http://www.navico.com)

All trademarks are property of their respective owners. Products, features and specifications are the most recent available at the time of printing and are subject to change without notice. Eagle® reserves the right to make changes and improvements in our products periodically without incurring the obligation to install such improvements and changes on equipment or items previously manufactured. ©2008 Navico, Inc.







The Way to Go

## **NAVICO EMEA**

(Europe, Middle-East, Africa)

Strandveien 18

1327 Lysaker

Oslo, Norway

For more information and world wide  
distribution overview, please visit

**[www.eaglenav.com](http://www.eaglenav.com)**