

Catalogue 2009



SIMRAD

Master the Elements



Simrad Simrad offers advanced, rugged and easy to operate marine electronics for all leisure boats, sailboat and yachts.



Content


Simrad Heritage.....	04
Simrad News.....	06
Simrad Systems.....	08
Simrad Navigation Systems.....	10
Simrad Radars.....	26
Simrad Autopilots.....	30
Simrad Remote Commander.....	40
Simrad Instruments.....	41
Simrad Safety and Communication.....	44
SimNet.....	54
Technical Specifications.....	55
www.simrad-yachting.com	70
Sales and Services World Wide.....	72



Inspired by the fishermen's life and work off the long, rough and rugged Norwegian coast, Simrad Yachting provides marine electronic systems with world-class functionality, quality and performance.

Simrad Heritage Right from the beginning, the history of the Simrad brand has been filled with entrepreneurs and pioneers whose hard work, passion and technical insight have formed one of the world's most recognized brands in the field of marine electronics.

The story started in 1947, when Willy Simonsen began producing high quality radios for fishing vessels. By combining the first three letters of the founder's last name, and those of his first product, the Simrad name was created and from then until the present day the Simrad brand has been synonymous with high quality marine electronics products.



With over 60 years at the forefront of product innovation, Simrad marine electronics have succeeded in being consistently rated as some of the most robust systems available in the market for both professional and recreational mariners. The first advanced auto steering system launched for the professional market was a Simrad autopilot and after winning more auto steering awards than all its competitors combined the brand continues to lead the sector in product development without compromise.

The Simrad brand manufactures a wide range of equipment, including systems for navigation, auto steering, safety, communications and fishfinding, all designed and built for mariners that truly seek to master the elements.

Simrad has been at the forefront of product innovation this year, with many of our best-known systems receiving extensive upgrades or new enhancements, fulfilling our passion for bringing you the most reliable marine electronics on the market.

Our aim is to ensure that you always have the best, the latest technology at your fingertips so that every on-water experience delivers maximum performance and enjoyment.

2008 saw the launch of Simrad's ground-breaking multifunctional integrated navigation StellaMaris, which was launched to widespread acclamation at the Genoa Boat Show in October. Recent product improvements have included new upgrades to the GlassBridge system, our AIS and

autopilot solutions, and a whole host of new information and useful tips coming on stream via the Simrad website.

2009 promises to be just as exciting as we continue to work on a range of new products designed to help yachtsmen and women to master the elements.

Simrad has issued a newly upgraded version of the highly sophisticated integrated **GB65 navigation system**

This now includes worldwide C-MAP MaxPro cartography plus weather data services including chart overlay care of Sirius GRIB meteorology files. The newly released combination of updated cartography, three-dimensional charts and weather data ensures that the GB65 remains one of the most desirable integrated navigation systems on the market. The speed and power of the GB65 opens up a world of navigational possibilities, with a single processor capable of supporting up to three displays, and a range of other upgrades now provides even better performance and integration.

Build your perfect bridge system with 12", 15" or 19" Professional Marine Monitors



Experience the future with **StellaMaris™**: a truly integrated command system tailor-made to meet the needs of superyacht owners everywhere

Launched at the 2008 Genoa Boat Show, StellaMaris has taken the marine community by storm with its power and versatility, which combines maximum navigation capability with boat-wide systems monitoring and control. This level of integration transforms the look of the bridge, replacing the usual multiplicity of mismatched equipment with a stylish display of coordinated screens and a single interface. StellaMaris – taking integration to the next level.



Simrad Automatic Identification Systems (AIS)

Simrad continues to lead the way with our exciting AIS solutions for the recreational market

All our navigation products offer excellent integration with the AI50 and the new NAIS300 black box systems, via the simple addition of SimNet daisy chain cabling. Simrad class B AIS units were recently awarded the approval of the Federal Communications Commission (FCC), a badge of recognition for maritime communications. The AI50 was the first compact class B AIS with a colour display and is available at a price that has brought the advantages of AIS reception to thousands of boat owners for the first time.



Simrad Autopilots The AP24 and AP28 EVC autopilot solution for Volvo-powered vessels is a dramatic step forward in autopilot simplification and performance

Working closely with Volvo engineering, Simrad has developed a system that is easy to integrate without compromising on performance. Boat builders and boat owners alike appreciate the direct approach to auto-steering, with a device that integrates with all your other electronic platforms and can plug directly into the Volvo engine system. With its state-of-the-art control functions, crisp display and advanced SimNet networking, the all-new Simrad AP28 is the perfect autopilot for large power and sail boats.





Building a Simrad System

Find your boat size and see Simrad's suggestions for how to compile your system whether you have a powerboat, sailboat or a yacht.

Powerboats and Yachts





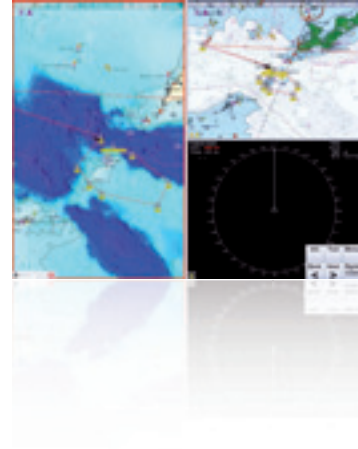
Sailboats



If in doubt about what suits your boat and needs best, you can always check with our dealers. See the back of this catalogue or check out your nearest dealer at www.simrad-yachting.com/distribution



All new Jeppesen Marine®
MAXPro Cartography.
3D charting, satellite and
radar overlays. Extreme
3D presentation.



Simrad Navigation Systems meet the needs of mariners through all times, still bringing them to a new level of experiencing life at sea. Never get lost. Never gamble on fish. Never lose confidence in rain or fog. Always be safe.

Simrad – Master the Elements. Purpose-built for safety and enjoyment on the water.

Easy to use and intuitive for expert and novice operators, Simrad Navigation systems provide visible and uncluttered presentation from stylish and robust displays.

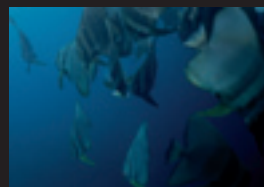
With superior worldwide charting coverage from Jeppesen Marine cartography along with sophisticated radar, echo sounder and fish finder integration, you maximize your marine performances. And the SimNet data networking makes the most of connectivity onboard.

Choosing a Navigation System is Easy with Simrad

For premier yacht helms that can accommodate multiple large screens, choose the Simrad GB65. For sophisticated performance in network applications, the GB40 offers 10" to 19" display packages.

For single station applications, choose the versatile NX40 8.4" or NX45 12" multifunction displays.





StellaMaris™ is the ultimate in integrated command and control for large yachts. This ground-breaking innovation allows the real-time monitoring and management of all navigational, electrical and entertainment systems from a single point.

Become one with your yacht as you experience the total control of StellaMaris™

The potent processing power of StellaMaris™ enables it to act a hub for an unprecedented range of compatible electronics systems – allowing a single individual to monitor and control everything from navigational and autopilot functions to engine outputs, entertainment and interior climate options. This unique level of sophistication includes a remote diagnostic capability, an innovation that promises dramatic reductions in down-time for maintenance as issues can be identified and resources made ready while the yacht is still at sea.



StellaMaris™
welcome to the
21st century.

A technical solution that is a beautiful as your boat

Say goodbye to the clutter and complexity of the traditional bridge, and instead enjoy the harmony and elegance that comes StellaMaris™. The simplicity and purity of an array of identical Glass Bridge screens free of visible controls will make your bridge as stylish as the rest of your yacht, while the dramatic reduction in input devices will ensure an atmosphere of calm and comprehensive control.

Simrad GB65 offers form and function-perfection for the discerning yacht owner. Powerful computing, extensive options and contemporary styling are combined in the ultimate navigation platform.

The Most Powerful Displays

Simrad's Premier Navigation system, the GB65, offers yacht owners the most powerful display options available.

The flexibility of the system enables the user to configure up to 12 integrated monitors. This should meet the most demanding yacht requirements in combining most applications.

Proven Navigation Interface

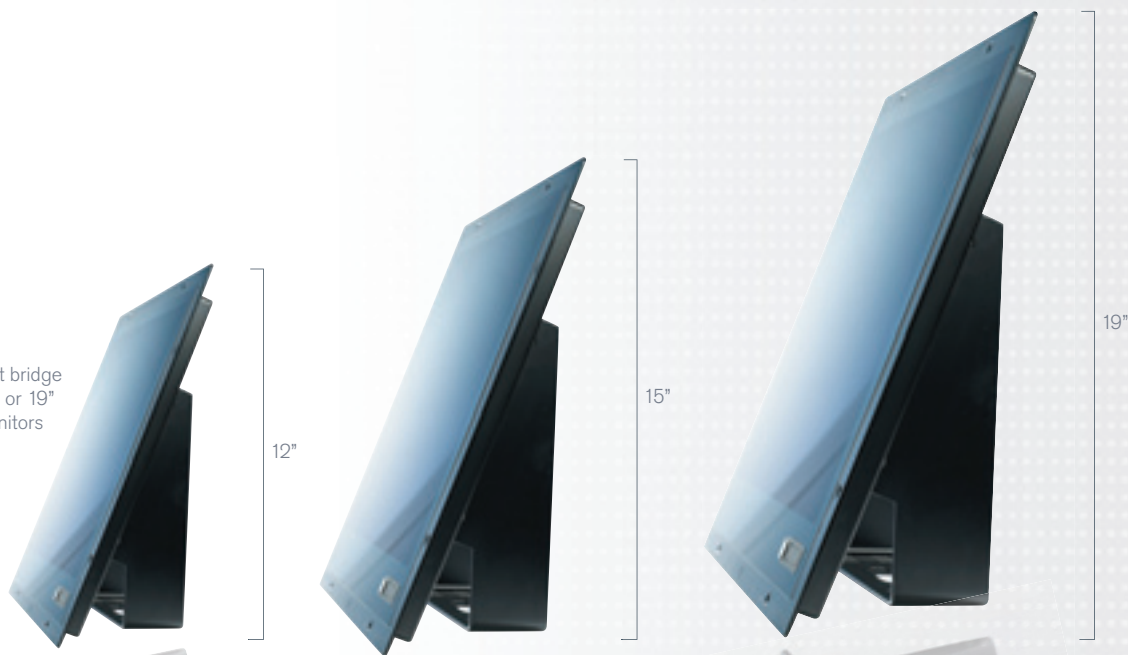
Now with Jeppesen Marine® MAX Pro™ cartography and the Admiral interface by

Jeppesen, the GB65 delivers proven charting and navigation expertise. Radar, Weather Data, Echosounder, AIS, and Video input options maximise situational awareness.

Complimentary Styling

Sleek, modern design elements of the GB65 allow for installations that compliment your helm styling. Surface mount, bracket mount or flush mount options are all available. Flexible interfaces allow for a variety of personal control options including trackballs, wireless keypads and waterproof pointing devices.

Build your perfect bridge system with 12", 15" or 19" Professional Marine Monitors





GB65 Special Features:

Connect three monitors in combination between VGA (standard) DVI (digital) and SVHS (television) video outputs.



GB65 Special Features:

Professional Grade Marine Monitors

12", 15" and 19" sizes available

Surface mount, bracket mount or glass-bridge mount

Robust 24 volt design with multiple video input options

Powerful Charting

Extensive C-Map MAX Pro worldwide Chart database by Jeppesen Marine

Proven database using CF92 global commercial data. Crisp vector detail, high resolution satellite overlays, and eye-popping 3D bathymetric displays

Proven Integrated Radar

Single or dual radar capability

6kW, 12kW or 25kW Open Arrays; 4', 6' and 9' antenna lengths

Simrad IMO Radar integration

Mini-ARPA operation with tracking capacity of up to 10 user defined targets

Performance Modules

600W or 1kW Echosounder

New Sirius Weather and GRIB weather capability

Integrate AIS with Simrad Class B AI50 system

Add IR cameras with 4 BNC video inputs

*With optional accessory and subscription



Multi-Monitor Support

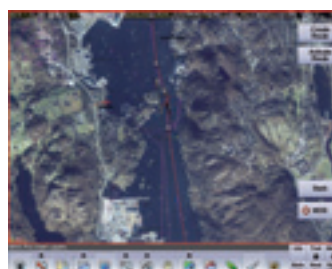
Each GB65 System supports up to 3 monitors. An integrated GB65 Network can consist of 4 GB65 Black Box Processors an integrated 12 display network.

Dual Radar Support

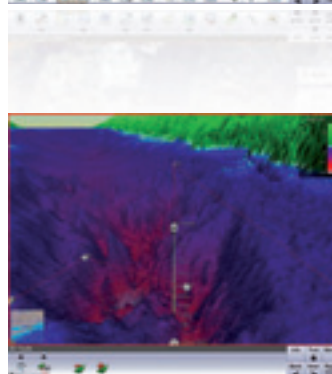
Connect and operate up to two radars simultaneously.

Commercial Radar Compatibility

Compatible with IMO radar and integrates with stand-alone radars with remote station capability.



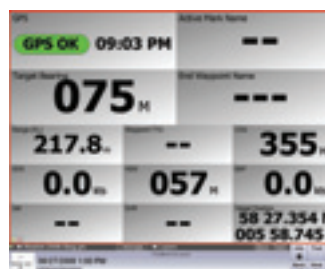
High resolution satellite photo overlay for superior navigation detail.



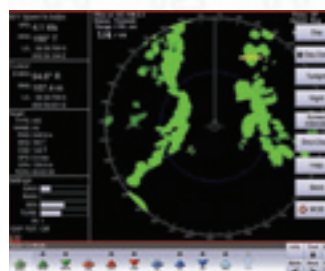
Eye-popping 3D bathymetric presentation



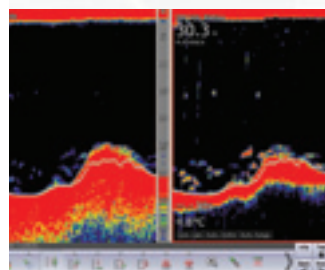
Satellite weather or GRIB weather capability



Data pages with graphic logging. 4 available data pages can be custom-arranged to display only the data you want.



Full screen radar, radar overlay capability with shadow cursor image on extended monitors



Powerful 1kW Echosounder

Simrad GB40 System provides flexible displays and multifunction networking to a wide range of boats. Attractive and functional styling is well balanced with robust, dependable performance.

Maximize Display Area

Simrad's innovative GB40 navigation system allows boaters to use larger displays efficiently in tight spaces. Recommended for vessels requiring 1 to 6 displays, the powerful NavComputer and versatile OP30 handheld controller will help tailor fit the perfect system to your boat.

Networked Multifunction Capability

C-Map MaxPro charting by Jeppesen delivers exceptional clarity. Simrad's professional-grade open array and radome antennas with overlay and MARPA provide maximum situational awareness. Add Simrad's powerful echosounder and a 4-port

video server or store and play digital media across your custom network.

Easy to Expand, Easy to Operate

Easily add remote displays. Easily integrate Simrad AP24 or AP28 autopilots, IS20 instrumentation and AI50 AIS system with plug and play SimNet simplicity. The OP30 handheld controller has dedicated access buttons to instantly display charting, radar or echo sounder screens. It doesn't get any easier to build or navigate your perfect system.

Standard systems designed with 10", 15" or 19" monitors.





A full line radar systems with Radomes and Open Array radars are available, with power levels from 2KW to 25KW via high capacity ethernet. All radar functions are available systemwide.





Build your perfect
GB40 bridge system
with Professional
Marine Monitors

The GB40 Features:

Powerful Charting

Jeppesen Marine® MAX Pro™ cartography with 3D presentation and satellite photo overlay.

Meets ISO 19379 certification for electronic chart database.

Crisp vector detail, guardian depth warning system.

High Definition Digital Radar

2kW & 4kW Domes

6kW, 10kW or 25kW Open Arrays

Easy target tracking with 10 Target MARPA, Chart overlay and Guard zone alarms

Performance Modules

Find more fish with the powerful 1kW Echosounder

Real-time, live weather information from Navico Weather Module and Sirius Marine*

* Subscription Required

** Available early 2009

Add Plug-n-Play Simrad SimNet Equipment

Class B AIS with Simrad Class B AI50 or NAIS-300 system

AP24 or AP28 Autopilots

IS20 Instrument displays

DSC Single and Multi Station VHF's

WR20 wireless instrument and remote

Built-in Multimedia Capability

Add a Simrad DVD to play movies or upload files

Integral Audio and Video Jukebox feature lets you store and play music and video directly from Navigation display

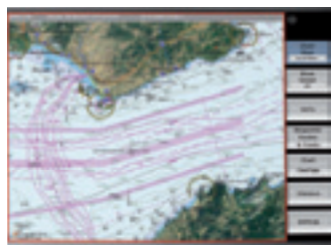
Network Video Ready

Add an Ethernet Camera or Video Server and share cameras or video anywhere on the boat

Powerful below-dash GB40 NavComputer module comes preloaded with global 3D-charts (note: purchase of regional chart unlock-code required) Can be installed in locations convenient for the various cable connections.



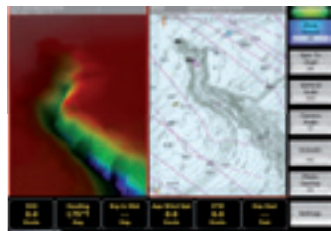
The modular concept of the GB40 system enables the installation of multiple OP30 operator panels close to the screen or close to the user alongside the steering position. Dedicated keys give direct access to Chart, Radar and Echo ensuring easy operation.



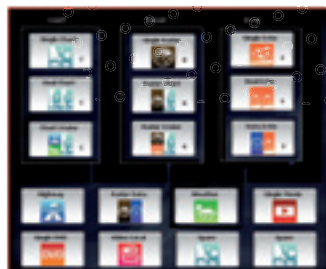
High resolution
satellite photo
overlay for superior
navigation detail



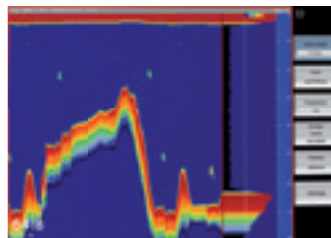
Full colour 3D
bathymetric
presentation



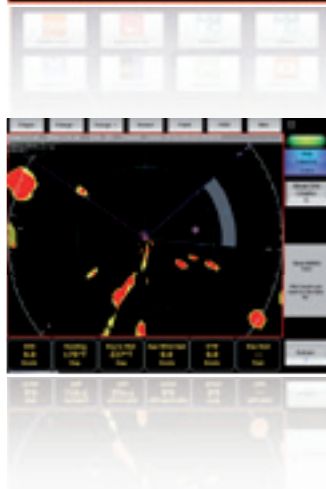
Direct access with
OP30 to pre-defined
Chart, Radar and
Echosounder pages.
Easy to customize and
navigate pages



Full colour high
definition radar with
10 target MARPA
and guard zone
capability



Powerful 1kW
Echosounder



NMEA2000
instrumentation
integration



Simrad NX40 and NX45 NavStation are flexible Multifunction Systems combining the ruggedness and dependability to handle any marine environment with the elegance and style to complement any boat décor.

High Resolution Bright Multifunction Displays

Compact 8" and 12" displays offer high resolution and excellent viewability. Variable split screen and full screen display modes displays information the way you want to see it. The NX Series provides the greatest flexibility to design the ideal system.

Built in Echosounder & Video

Fully loaded with built-in 1kW echo sounder and standard composite video input. Add an HD digital radar dome or array for complete multi-function performance.

Easy-to-use Menus and Page Displays

Easy to use, intuitive menus and the ability to save favourite page setups get you to the information you need fast.

SimNet

An integral part and gateway for connecting other devices to the NX Series, SimNet provides easy-to-connect, lightning-fast communications with other SimNet compatible electronics such as Simrad autopilots, instruments and VHF radios.

AIS

Fully AIS ready, the NX Series offers powerful collision avoidance functionality. Commercial vessels are clearly displayed on the systems plotter or radar screen, and can easily be polled for detailed information.

NX40/NX45 Features:

Sunlight Viewable, High Resolution Displays

NX40 8" 800 x 600 display

NX45 12" 800 x 600 display

High Definition Digital Radar

2kW & 4kW domes

6kW or 10kW Open Arrays

Engine Performance Monitoring

Mercury SmartCraft™ ready. Add a Smartcraft gateway to view your engine information on your navigation display.

Integrated Fuel Computer Option

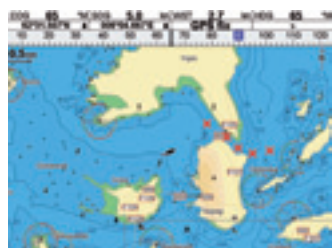
Add standard fuel transducers to track fuel statistics including consumption rate, fuel remaining and current range.

SimNet interface included

Plug-n-play connectivity with AP24 & AP28 autopilots, AI50 & NAIS-300 AIS systems, and IS20 instrumentation.

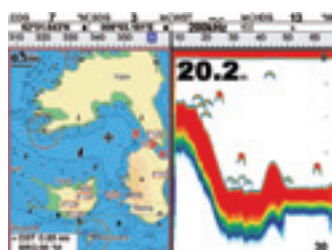
Simrad NX-Series NavStations are available in 8" and 12" sunlight viewable screens.





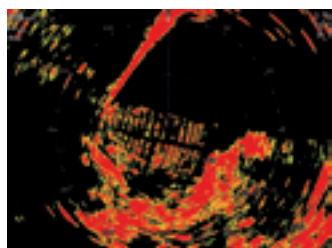
Chartplotting

C-Map MAX cartography provides detailed, accurate situational charts. View markers and buoys, current data, port and land information, aerial photography of inlets and harbor entrances. a 32MB internal base map that provides world-wide basic charting detail is included.



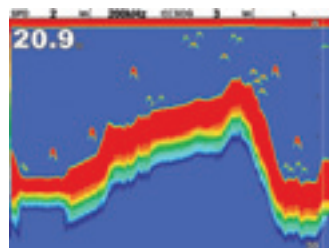
Continuous position

Powered separately from the NX-Series, the smart GS10 DGPS antenna continues to provide position information over SimNet, even when the NX Series is turned off.



Digital Radar

High Definition Digital Radar, exclusive to Simrad and other Navico brands, delivers the best target separation and definition available while providing optimal rejection of noise and clutter. Simrad Digital Radar is available in a number of radome and open array options for the NX Series.



Echosounder

Add a transducer and the built in echo sounder is ready for use. The NX Series automatically detects the transducer's power. View bottom contour detail in full, split or quarter screen display mode.



Video

Video input options provide an optimal view of the vessel and surrounding waters right on the NX display screen. Connect NTSC or PAL television, video, data or cameras and customize the menus to make video access easy.



Fuel and Engine

Optional fuel flow sensors provides real-time fuel consumption to determine the best speed to optimize fuel usage. The optional single and dual engine SmartCraft™ gateways, provide mariners complete engine operation and diagnostic information.



Simrad AI50 & NAIS-300 Automatic Identification System is a new type of safety equipment that enables you to see and be seen at sea, in order to avoid collisions between marine vessels, which is a serious concern in today's congested sea ports and busy ocean shipping lanes.

Greatly Reduce the Risk of Collisions

Pleasure boats can easily go undetected by the radar system on large commercial vessels, because the radar's line-of-sight is blocked by the superstructure of the ship. This is one of the reasons why large commercial vessels are required to carry an AIS-transponder. The AIS range is line-of-sight – typically about 20 nautical miles.

AIS focuses your awareness on all vessels in the vicinity and helps reduce the risk of collision by exchanging safety data between them – such as:

Vessel Name, Size & Call sign - Maritime Mobile Service Identity number (MMSI)

Vessel Type

Time to closest point of approach

Course, Speed and Heading

Simrad is currently the only major brand that offers NMEA2000/SimNet compatible Class-B Transmit and Receive AIS transponder systems, both as an integrated standalone product with colour display (AI50) and as a black box solution (NAIS-300) designed for use with any brand AIS-compatible multi-function display product.

AI50 & NAIS-300 Common Features

Both systems have a NMEA-2000/SimNet Interface and a NMEA-0183 Interface (High Speed), AIS Class-B transmit receive function and an integrated GPS receiver.

AIS is first and foremost a safety system; but the AI50 includes a number of features to help ensure that your boating experience is both safe and enjoyable.

NAIS-300 – the Black Box Solution



The AI50 can be bracket or flush mounted



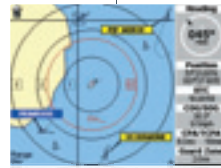
Move the cursor over a target to identify the vessel



Set a guard zone for a target



Range rings make it easy to judge distance to any target



See when your friends are in the area



AIS50 Features

Class-B AIS transponder with integrated GPS and 4" TFT colour display

Backlit display and keypad

Built-in map with range rings and 12 zoom ranges from 0.01 to 32 nm

Cursor ID mode allows easy readout of target vessel data

Target track log mode data can be stored and played back via SD-Card

Call Target. Simply place the cursor over the target you wish to contact and press the DSC button*

* Note: This feature requires that the AIS50 is connected to a Simrad RS80 series VHF radio.

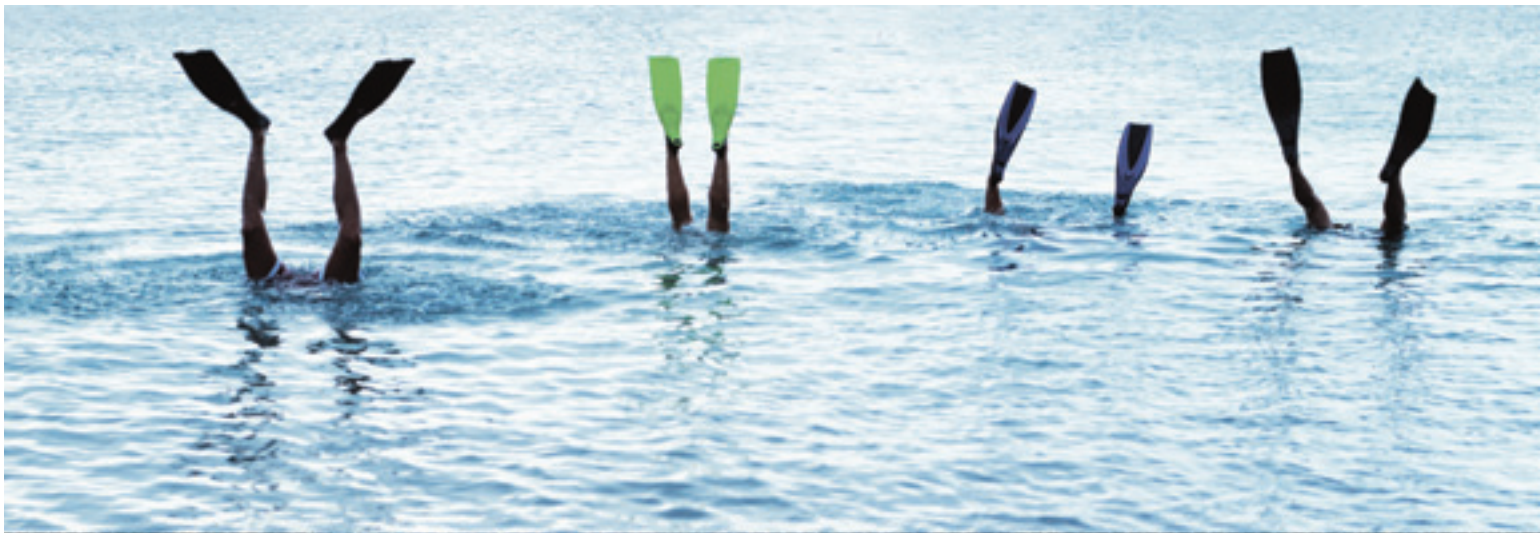
Favourite list and Buddy Track features notify you when a tagged AIS vessel comes within range. Audible/Visual alarms for Collision, Lost vessel track, Favourite buddy alarm and Guard Zone

NMEA2000/SimNet/RS232 Interface

NAIS-300N/L Features

The NAIS-300 is a Class-B AIS black box transponder system with an integrated GPS receiver. It comes in two versions; the L-version with the NMEA2000 Interface and the N-version with the SimNet Interface. A CD-ROM and a RS232 PC cable are included for entering the MMSI number and other vessel data.





A full line of high performance DSP (Digital Signal Processing) radar systems with Radomes and Open Array radars are available, with power levels from 2KW to 25KW via high capacity ethernet. Multiple display systems offer full radar control of all features from any monitor. Radar functions and features vary between models and displays.



Radars for confident, trouble-free navigation in darkness, fog and other conditions of restricted visibility, a Simrad radar displays all the information you need about other vessels, obstacles and structures with exceptional clarity.

Respected Around the World

For six decades, Simrad radars have been relied upon every day all over the world by vessels with widely varying functions — such as fishing trawlers, passenger ferries, coastguard patrol vessels, work boats, pleasure craft and super-yachts.

Simrad radars feature best-in-class technology that easily integrates with your suite of Simrad marine electronics to provide exceptional all-round vision and visibility. Available in both radome and open array configurations and in power outputs from 2 to 25 kW, the Simrad radar range has a model for every size and type of leisure craft.

Standalone or Integrated Options

For the ultimate in convenience and versatility, connect your radar to your Simrad navstation to view your radar data either in full screen mode or as part of a wider navigation output. Advanced Simrad navigation systems such as the GB40 will even overlay your radar return on to your electronic chart and combine it with the AIS input for the ultimate in integrated navigation.

Simrad GB40 and NX40/45 HD Digital radar systems combine high performance scanners and microwave technology with the latest in digital radar processing. Exceptional detection of small or distant targets with virtually no screen-clutter displays the full picture of your surroundings.

Exceptional Detection without Screen-clutter

Simrad's GB40 HD Radar Systems comprise a full range of high-performance digital signal processing radar systems. They use both Radomes and Open Array antenna, working with power levels from 2KW to 25KW via high capacity Ethernet. Simrad GB40 ensures exceptional detection of small or distant targets, using advanced Digital Signal Processing (DSP). Screen clutter in any weather is virtually eliminated allowing a clear, accurate and easy-to-interpret image, using 10-bit digital radar video sampling and Sensitivity Time Control (STC).

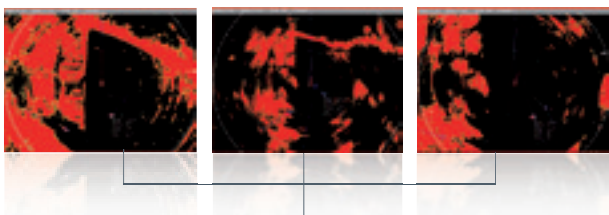
Adding a high speed heading input from an autopilot system or dedicated sensor allows the

radar image and MARPA-targets to be accurately overlaid on the chart. Enhanced rotational mode enables you to interpret targets instantly.

Simrad's HD Digital radars automatically adjust colour gradients on longer ranges for better target interpretation. This is especially useful when looking into storm areas and weather fronts.

Automatic Harbour and Offshore modes provide optimised radar imaging for hands-off operation.

The radar provides bearing and distance, speed and course, closest point of approach and time on selected targets. Easy to use Guard Zone areas can be shaped and defined by the user, to maintain a radar watch in specific zones. Qualified radar targets that enter the active zone will trigger an alert on the radar system.



Targets can be interpreted instantly through chart information – such as navigation aids and coastlines. Heading allows Mini-ARPA operation on the GB40 with tracking capacity up to 10 different User-defined targets. Different colour palettes are provided to suit the user's taste as well as to improve viewing in different lighting conditions.



Radomes are compact and lightweight, making them ideal for sail boats and small powerboats where space and power supply are limited.

Simrad BB80 is a highly advanced and robust standalone black box radar system with model ranges from 64 to 96 NM. High resolution monitors with powerful backlight and bonded display technology ensure optimum readability under all lighting conditions and from any viewing angle.

More Efficient and Smoother Target Tracking

Recognising the increased speed of today's motor yachts, the high-speed scanner mode provides twice as many target updates as traditional radars. The optional ATA module tracks up to 10 different targets automatically or designated by the user. Simrad BB80 can also be set for five automatic and five user selected targets. The radar will provide bearing and distance, speed and course, closest point of approach and time on selected targets. External Automatic Identification System transceiver can be interfaced with the radar via the optional AIS module. Vital data with name, position, course and speed from other vessels will appear and their position will be represented in relation to the host position, increasing navigational safety.

In addition to the efficient dimmer function the night display option will reverse the daytime colour presentations protecting the user's night vision as it reduces light emission from the screen. The radar scanners ranging from 6 kW to 25 kW feature a new receiver front end with extended dynamic range. With the latest generation software this will improve short range and sea clutter performance, making it easier to distinguish buoys, small vessels and other targets in a rough sea.

For the most advanced and demanding installations, two complete systems with black box, display and operation unit can be interconnected sharing the same scanner unit or operate with two scanners, which can be shared or interchanged electronically.



A wheelmarked IMO RA90 system is available with a professional 19 inch monitor, a special 12kW or 25kW Open Scanner, and an upgraded computer black box. This radar is completely compliant with latest SOLAS carriage requirements for vessels under 10,000 GT and fully meets MSC 192(79) tough performance standards effective from 1 July, 2008. Read more at www.simrad-yachting.com



The BB80 radar features an additional VGA-output connector for an extra monitor, which can be placed away from the main radar system.



Simrad Autopilots At the single press of a button, it will take control of your boat's steering. It is like having an extra trusted crew member on board, ready to take the helm, day or night, whatever the weather. It gives you more time to look after your crew and your boat.

Simrad Autopilots Bring your Boating Experience to a New Level.

Whether you already have enjoyed it or you are yet to experience the freedom of a really good pilot you will see that Simrad Autopilots reduce your workload and fatigue, improve your situational awareness and safety – and you arrive fresher at your destination. Expand your boating experience and make the most of your electronics.

All our pilots offer a range of features to enhance your experience, whatever type of boating you enjoy

On a Power Cruiser, rock solid handling and track keeping with the autopilot make passages a pleasure.

When fishing, the dedicated fishing patterns and functions help you on the way to that tournament catch.

For sailing, the advanced wind features make efficient passages a breeze, even when you are short handed.

Simrad Autopilots are complete systems built up from building blocks. Some of them will be of your choice; others are defined by the size of your boat and the type of steering. Our extensive portfolio of equipment and systems caters for all needs and budgets.

Simrad Autopilots are famous for their unique blend of style, functionality and technology which has won them the prestigious National Marine Electronic Award (NMEA) 40 times since 1983.





Simrad AP50 offers the ultimate in autopilot performance for vessels over 50 feet. More than 60 years of experience and development is embedded in the most comprehensive of all pilot system packages. You will find all the features you would expect from a true commercial pedigree.

A Complete Bridge Steering Station

The AP50 is one of the most versatile pilot systems available for this size of vessel. It offers a wide range of controls, displays and interfaces to build up a complete bridge steering system suitable for super and mega yachts, power and sailboats. There is a choice of heading inputs including gyrocompasses and fluxgate compasses to ensure top line performance. The commercial pedigree ensures the robustness of the complete system. The ideal choice for your vessel, whether in build or in refit.

Specifying your AP50 Pilot System

For complete specification and installation requirements, please contact your local Simrad dealer, or visit www.simrad-yachting.com

AP50 Versatility, Performance, Robustness Features

Simple operation with dedicated push buttons controls.

Interfaces to virtually any type of steering gear.

Any combination of dual compass input including NMEA sensors.

Integrated thrusters control for low speed performance.

Powerful calibration parameters allow optimum performance for all hull types.

Large clear graphic screen with dedicated control buttons and course control knob. Designed for multi-station installations working alongside selected auxiliary controls for dedicated rudder position displays. The AP50 can be interfaced to a wide range of heading sensors including standard magnetic compasses, fluxgate compasses and gyrocompasses.





The performance of the steering algorithms is rooted in the rough waters of the North Atlantic. The AP50 provides precise steering in all conditions while using the minimum of rudder movement.

QS50

Finger tip control with the QS50 Quickstick, can be mounted in the arm of the captain's seat for relaxed total control.



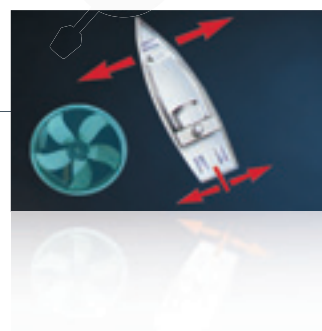
FU50 and S35 Follow Up and Steering Levers

A range of control levers for precise vessel control, options for mode control and mechanical lockout versions.



Thruster control

Adding thruster control gives you the benefits of the AP50 even below normal steerage speeds, using either thrusters alone or thrusters and rudders to maintain heading. Link it to the fingertip control of the QS50 and enjoy the ultimate piloting experience.





Simrad AP28 and AP24 Pilot Systems, ideal for power, fishing and sailing boats from 35 to 80 feet.

The Joystick JS10 is a neat and compact way to control to your autopilot. Its size means it can be conveniently mounted for example in the armrest of a captain's seat.



Simrad's Award Winning Leisure Pilot

Whether it's a casual day on the water with friends, a tournament match or an extended sea passage, our range of pilots has the performance and reliability you require. A Simrad pilot is the perfect match for the IS20 instrument range, and SimNet will give you access to the range

of advanced features you would expect from a state-of-the-art pilot. The AP28 offers a full size head with large display and course control knob. The AP24 offers the same functions but in a reduced package for installations where space is at a premium.

State-of-the-art display and control functions makes the AP28 the perfect autopilot for larger power and sail boats.



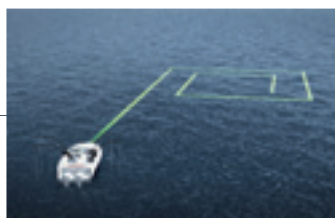
The AP24 combines space-saving design with state of the art auto steering, making it the perfect choice when space is at a premium.





Integrated Turn Patterns

A range of integrated turn patterns assist you with fishing, diving or just recovering a lost fender.



Virtual Rudder Feedback

Eliminates the need to fit a rudder position sensor, which saves time and money on tight installations such as outboards and stern drive boats.

*Requires the RCH2 rate compass.



Dodge Function

The dodge function allows you to navigate around obstructions without disengaging your autopilot.



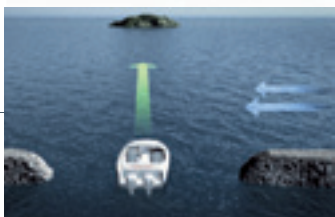
Constant Depth Tracking

Using the power of SimNet, the pilot will use the data from the depthsounder to follow the line of the seabed, and stay in constant depth of water. Ideal for fishing or dodging the tide.



No Drift Mode

Combining the power of the autopilot and the GPS on the SimNet allows you to operate in no drift mode; it counteracts the effects of wind and tide to ensure your track is straight and true.



Advanced Wind Steering

The pilot will use wind information from the IS20 system and Navigation information from your chartplotter to assist you in sailing most efficiently to your destination.





Simrad AP12/14 Powerpilots are sophisticated self-contained pilot systems for cable steered power boats up to 35ft. They come with powerful and reliable designs with a choice of control heads.

Simple, Powerful and Reliable Designs

Select between the AP12 with its fixed mount control, or the AP14 with its remote control with extra LCD display, connect additional control units for extra flexibility when required and away you go. The systems are simple to install and easy to operate. These pilots can be connected to chartplotter systems, a single press of the Nav-key and the GPS-system will navigate you to your chosen destination.

Easily create a multi-station autopilot system by adding additional controls.

The AP12 and AP14 are for push-pull cable steered powerboats.

The AP12 and AP14 can be easily integrated to GPS via NMEA.

The AP12 and AP14 both have an electronic intelligence that automatically adjusts their steering action to the current conditions.

The AP12 is a low profile, fixed surface mount control head with simple push button control and LED indicators.



The AP14 is a handheld control unit which has a clear LCD display showing heading and navigation information. It can also be easily operated while attached to the bulkhead bracket.





Simrad TP10, TP22 and TP32 Tillerpilots offer high performance for small to mid-range tiller steered sailboats. Adding a remote control is easy, and gives you extra flexibility and comfort.

Enjoy the silence while sailing with a quiet, accurate, efficient, robust and ever popular Simrad Tillerpilot

A range of sizes and mounting accessories lets you find the ideal combination for your boat. For yachts up to 30ft, choose the TP10, between 36ft and 39ft, opt for the TP22 and for yachts over 39ft choose the TP32. When connected to a SimNet system, these pilots provide functions that were once only found on top-end systems.



The remote control

Using Simrad's HR22 Tillerpilot remote control gives you freedom to operate the TP22 and TP32 wherever you are on board, sheltering under the spray hood in rough weather or handling sails on deck.

Waterproof sealing for protection from elements and reliable use.

Extremely quiet, enjoy the silence of sailing.

SimNet compatible, simple-plug-and-play installation (TP22 and TP32).

Easy operation.



TP22, 32 options

The tillerpilots can be mounted with a cantilever, a pedestal, a pushrod or a tiller bracket.



Autopilot Selection Guide

How to Select your Autopilot System

Here you can see how the system is compiled, and we have also tried to help you select the right product for your boat.

Pick the drive that complements your boat from the selection guide on the next page. There will be a system pack available with everything needed to fit and commission your pilot. If in doubt about what suits your boat best, you can always check with our dealers. See www.simrad-yachting.com

System Pack Options:

Pro-pack: Includes a rate gyrocompass for the ultimate in steering performance

Standard pack: Contains a standard fluxgate compass

Virtual Rudder Feedback pack: Select this for outboard systems where the rudder position sensor cannot be fitted.

The Eyes

The Compass is the eye of the pilot, keeping control over the course. By adding a rate gyro the compass provides accurate heading information.



WR20

Enables wireless control of the autopilots, instruments and VHF radios.



Joystick JS10

The JS10 Joystick is ideal for mounting in the arm of your captain's seat and adds the element of finger tip control.



The Control

The control head does exactly what it says on the box. A user's choice with a range of sizes and styles.



The Rudder

The Rudder Position Sensor improves the performance of the pilot, and contributes to gentle and accurate steering.



The Muscle

The drive actuator is the muscle that actually moves the rudder. It comes in different models to fit the type and size of the vessel's steering systems.



The Brain

The autopilot computer is the brain and the heart of the system, processing navigation data from the compass, GPS and instrument system to an output of smooth proportional control of the rudder. Simrad Autopilot computers come in various power ratings suited to a variety of vessel sizes.

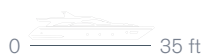


Drives for Power Boat Steering Systems

AP12R/AP14R Mechanically Steered Power Boats

AP12R/AP14R
Mechanical Steering up to 35 ft.

0 — 35 ft



AP24/28 Systems Mechanical Drives for Wheel Steered Yachts

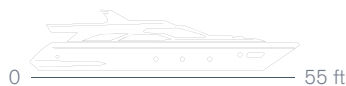
MSD50
For all size boats with I/O Stern Drives.
Typically fitted up to 39 ft.

0 — 39 ft



AP24/28 EVC
For all size boats with Volvo EVC.

0 — 55 ft



AP24/28 Systems Pumps for Boats with Hydraulic Steering

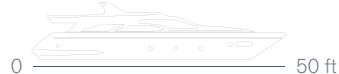
RPU 80
Hydraulic Steering Rams 80-250 cc capacity. Typically fitted up to 35 ft.

0 — 35 ft



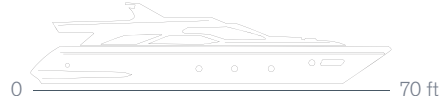
RPU 160
Hydraulic Steering Rams 160-550 cc capacity. Typically fitted up to 50 ft.

0 — 50 ft



RPU 160
Hydraulic Steering Rams 290-960 cc capacity. Typically fitted up to 70 ft.

0 — 70 ft



MSD50

Cable operated stern drive systems with a choice of fitting kits to suit most engines.

Pumps

Hydraulic pumps for use with all hydraulic steering systems. For outboard engine installations VRF™ system packs are recommended. Specific fitting kits are available for Verado Engines. The pump selection is based on the size of the Verado Rams.

Autopilot Selection Guide Yachts

TP 10/22/32 Tiller Steered Yachts

TP10
Tiller steering up to 29 ft.

0 — 29 ft



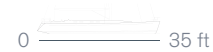
TP22
Tiller steering up to 33 ft.

0 — 33 ft



TP32
Tiller steering up to 35 ft.

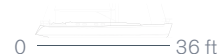
0 — 35 ft



AP 24/28 systems Mechanical Drives for Wheel Steered Yachts

SD10
Wheel steering up to 36 ft.

0 — 36 ft



DD15
Wheel steering up to 45 ft.

0 — 45 ft



AP 24/28 systems Hydraulic Drives for Wheel Steered Yachts

HLD 350
Wheel steering up to 39 ft.

0 — 35 ft



HLD2000L
Wheel steering up to 50 ft.

0 — 50 ft



HLD2000LD
Wheel steering up to 65 ft.

0 — 65 ft



SD10 Systems

A flexible inboard pilot that is a true alternative to lightweight cockpit mounted pilots.

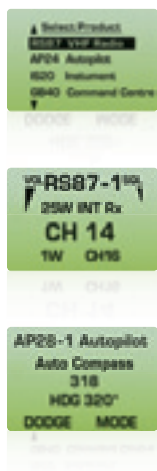
DD15

High efficiency and low back drive are key characteristics of this Direct Drive actuator.

Hydraulic Linear Drives

Hydraulic drives, renowned for their rugged power and reliability, mount directly on the steering quadrant.

Specific Technical information for drive selection is found on pages 62 and 63 of this catalogue, or on www.simrad-yachting.com



Drop down menu.

VHF functions are easily accessed through the menu.

Select advanced steering functions from the menu.

Simrad's award winning WR20 Wireless Remote Commander enables wireless control of compatible Simrad autopilots, instruments and VHF radios at a distance of up to 100m/330ft.

Have it your way

The WR20 system consists of a wireless waterproof handset and a below-deck processor box that connect to the SimNet backbone. The versatile handset allows custom configuration of multiple data pages and features a 1,600 mA Li-Ion battery that is automatically recharged when the handset is returned to its cradle. The bright backlit display and ergonomic keypad offer straightforward operation and a powerful Bluetooth Class-1 wireless interface ensures wireless operation from virtually any location on the vessel. The WR20 can also be paired with Bluetooth compatible mobile phones providing the same functionality as a regular Bluetooth headset.

Wireless VHF Handset

If your boat is equipped with a SimNet enabled VHF radio such as the RS87, the WR20 provides full wireless radio control; plus a two-way intercom between the WR20 handset and the base radio.

Remote Commander Features

- Controls the full range of electronics
- Large 128 x 64 pixel graphic display
- Backlit display and keys
- Single, dual or multi-line display format
- Customisable data pages
- Autopilot, Instrument, VHF control
- 1,600 mA rechargeable battery
- Waterproof to IP67

* Mobile phone control is limited to ~10 metres.



Full function VHF mobile handset for your Simrad RS80 VHF series. Voice and intercom operation.



Simrad Instruments provide key information to allow you to make informed decisions about navigation, weather, the performance of your boat or just if the water is warm enough for a swim. All the information you need at the touch of a button.



Simrad IS20 instruments provide you with a key part of any electronic navigation system. There is always a requirement for dedicated data displays that provide easy and quick access to important data.

You may want a fully integrated sailboat system using all display types, or a sophisticated motor yacht Glass Bridge system with remote data displays. Simrad IS20 displays are available in several variants to meet all your requirements. In any cases the Simrad Instruments have the key advantages of ease of use and ease of installation through the single wire SimNet data bus.

Multi-function Instruments with Precise Data, Clearly Displayed

The Simrad IS20 instrument series provides a comprehensive multi-function display network. As it interfaces with active sensors and other navigation units, such as chartplotters and autopilots, via the SimNet data bus the IS20 offers unsurpassed performance and ease of use.

Clear Presentation, Easy to Use

A high contrast LCD display with red or white backlighting provides an easy-to-read display in all weather and light conditions. The clearly illuminated buttons are easy to see and use in the darkness.

Simple Installation, Front Mounting

All displays are front mounted with no need for access on the inside of the console or dashboard.

SimNet – “Daisy chain”

IS20 communicates through the SimNet data bus. Simply plug displays and sensors together, in any order, using the slim line SimNet cables.



Speed/Depth

The DST800 SimNet sensor provides depth, speed and temperature data from a single through-hull sensor.

Supplied with a plastic through-hull housing. A stainless steel housing is also available.



Wind

The IS20 Wind Vane provides high precision wind speed and wind angle information to the system via SimNet.



Heading

The IS20 Compass System is supplied with the FC40 fluxgate compass sensor. IS20 can accept data from any SimNet heading sensor and many other sources.

Simrad's IS20 digital instruments provide graphic trend indicators and sophisticated navigation data on a large, high contrast, dot matrix display. You get a clear view in all light conditions. Two displays are available: GRAPHIC for flexible display of all system data and COMBI for straightforward display of key data.

IS20 Graphic

The IS20 GRAPHIC multi-function instrument lets you swap quickly between the user configured display pages. Its flexibility makes it universally popular among yachtsmen. It has 8 data pages, configurable to display your choice of data, including speed, depth, wind, log, timer and other vessel data. As the IS20 GRAPHIC can operate as a multifunction SimNet or NMEA 0183 repeater, it is ideal for connection to other electronic navigation devices from Simrad or other marine electronics manufacturers.



IS20 Combi

The IS20 COMBI provides key Speed and Depth data in an easy to read layout from 4 preconfigured data pages display data including depth in meters, feet or fathoms, speed in knots, mph or kph, water temperature in Fahrenheit or Celsius, and Trip Log. You can use the IS20 COMBI as a standalone display in conjunction with the DST800 sensor, or integrated into an IS20 multi-function system.



Simrad's IS20 analogue instruments features classic style with their quick-to-read analogue dials and centre mounted high-contrast LCD displays. Made with precise micro-stepper motor technology along with a straightforward user interface the IS20 analogue instruments are exceptionally precise and easy to use. Four analogue displays are available: Wind, Tack, Compass and Rudder.

IS20 Wind

The IS20 WIND system includes the high performance IS20 Wind Vane. The data output from the sensor is processed using a highly advanced Kalman-filter, ensuring superior accuracy and a fast reaction to changes in wind speed or direction. You can choose the display of data, including true Wind Angle and Speed, apparent Wind Angle and Speed, and Velocity Made Good (VMG).



IS20 Tack

The IS20 TACK provides the keen sailor with a magnified dial that displays the key wind angle data, allowing more precise steering when sailing to windward.



IS20 Compass

The IS20 COMPASS provides much more than a precise heading data display. The display shows key steering data such as heading, deviation from user-set Heading and Cross Track Error. The IS20 COMPASS system is supplied with the Simrad FC40 fluxgate compass sensor.



IS20 Rudder

The IS20 RUDDER provides a precise readout of the rudder angle. Invaluable when docking, it is also incredibly useful when sailing – allowing you to trim the boat to minimise rudder resistance while sailing. It can also display additional functions such as heading, deviation from user-set heading and Cross Track Error are displayed when connected to certain other IS20 instruments or SimNet autopilots. The IS20 RUDDER system includes both display and rudder angle sensor.





Safety and Communication

Wherever you are, be prepared, stay safe and keep in touch with Simrad's powerful but easy-to-use safety and communication devices.

Simrad safety

Simrad Yachting has a reputation as a leading manufacturer of tough and dependable electronic equipment, and nowhere is that more apparent than its range of EPIRB distress beacons and GDMSS survival radios. All our safety equipment is built to the highest specifications and designed to remain in readiness for many years.

Simrad communications

Valued by professional users for their toughness and dependability, Simrad VHF radios come in handheld, fixed and system formats. Powerful, and packed with functions to enhance both safety and versatility, Simrad VHF's are for the discerning owner who will settle only for the best.

When compromise isn't an option.



Choose between standard and integral-GPS EPIRB models, along with manual or automatic release. Two ultra-tough GMDSS handheld VHF radios offer emergency only and emergency plus on board use.



Ready to acknowledge a call from intercom 1.

Calling intercom 2 with indication of listen back volume.

Radio shown in forward hail mode and with listen back volume.

Simrad VHF radios provide reliable and dependable communication for all types of vessels, and feature some of the most advanced VHF features available today. For decades, mariners have relied on Simrad to build some of the toughest and most reliable VHF radios.

Top Performance, Convenience and Reliability

Simrad RS87/86/82/81 Modular VHF Radios are the premium line of VHF radios and excellent choices where space is at a premium or whenever you have multiple locations onboard that you wish to equip with VHF. The Simrad RS80-Series comes in four versions, each with a stowaway black box transceiver unit plus one or more

waterproof control units that can be installed in any desired location throughout the vessel – including open cockpits. RS87/86/82/81 Modular VHF radios all include full Class-D DSC functionality. The distress and all ships buttons are protected by a spring-loaded cover to avoid accidental use. Individual ship calls and group calls are easily executed from the internal MMSI directory or entered directly on the numeric keypad.



RS87/86

Simrad RS87

The Simrad RS87 Modular VHF System is our flagship radio and includes all of the high-end features you expect from a premium Simrad product, including support for up to four control stations with intercom, built-in loudhailer and foghorn functions. The telephone style handset includes a large display and a numeric key-pad for easy entry of channel numbers. The external speaker volume can be controlled from the handset.

Simrad RS86

The Simrad RS86 Modular VHF System is equipped with a traditional fixed mount style control panel and includes all of the high-end features found on the RS87. The fixed mount control panel has a large display, built-in loudspeaker, numeric keypad and rotary controls for volume, squelch and channel selection. You can choose between a removable handset style microphone or a fist microphone.

Simrad RS87/RS86 Features

25/1W Stowaway black box transceiver

Built-in Class-D DSC**

All International and Country specific Channels (Varies by region)

Weather channels and NOAA weather alert (America Only)

ATIS function for inland waterways (Europe Only)

NMEA 0183 and SimNet/NMEA2000 peripheral interface

Above deck equipment is waterproof to IP67

Built-in Hailer with listen back feature

Foghorn feature with automatic signal patterns

* Control units can be any combination of RS87 handsets and RS86 control panels

** Class-D DSC function is only available in combination with the RS82 numeric handset

RS82/81

Simrad RS82

The Simrad RS82 Modular VHF System is similar in style to the RS87 VHF, but is limited to maximum two stations and does not include some of the high-end features found on our flagship models. The telephone style handset has a large display, numeric keypad for direct channel entries and individual volume control for the external speaker.

Simrad RS81

The Simrad RS81 Modular VHF System offers a practical voice only solution ideal for vessels that do not require D-DSC functionality. It includes support for up to 2 stations. The telephone style handset has an extra large loudspeaker and volume control from the handset, eliminating the need for an external speaker. The channel selection is done by up/down buttons while a number of dedicated VHF keys provide easy access to all features of the system. The Simrad RS81 system is upgradeable to Class-D DSC by addition of AHK82 handset kit.

Simrad RS82/RS81 Features

25/1W Stowaway black box transceiver

Built-in Class-D DSC**

All International and Country specific Channels (Varies by region)

Weather channels and NOAA weather alert (America Only)

ATIS function for inland waterways (Europe Only)

NMEA 0183 and SimNet/NMEA2000 peripheral interface

Above deck equipment is waterproof to IP67

Support for up to four stations* with intercom between handsets



Support for up to two stations* with intercom between handsets



Simrad RD68/RT64 fixed mount VHF radios are designed to exceed the stringent requirements of professional users around the world and keep working in conditions that lesser VHF radios simply cannot tolerate.

RD68

Simrad RD68 Class D-DSC Fixed Mount VHF

The Simrad RD68 is unique compared to most VHF radios on the market, because it includes a full alphanumeric keypad, which makes the RD68 exceptionally well suited for D-DSC safety operation. The sea can be a dangerous place and it is nice to know that you can count on Simrad to help protect you and your loved ones.

RD68 Features

- Spring loaded Distress Button
- Removable fist microphone with 90° angle connector
- All International & Country specific Channels (Varies by region)
- Weather channels (America Only)
- ATIS function for inland waterways (Europe Only)
- Dual/Triple channel watch
- Scan all & Scan Memory
- Programmable user channels
- NMEA 0183 peripheral interface
- Waterproof to IP67

RT64 VHF

Simrad RT64 Class D-DSC Fixed Mount VHF

The Simrad RT64 in its compact design offers a practical voice-only solution ideal for vessels that do not require D-DSC functionality.

RT64 Features

- 25/1W Class-D DSC VHF radio
- Rotary controls for Volume, Squelch and Channel selection
- Removable fist microphone with 90° angle connector
- All International & Country specific Channels (Varies by region)
- Weather channels (America Only)
- Backlit display and keys
- Dual/Triple channel watch
- Scan all & Scan Memory
- Programmable user channels
- External loudspeaker connection
- NMEA 0183 peripheral Interface
- Waterproof to IP67

Simrad RD68 includes a full alphanumeric keypad, making it well suited for D-DSC safety operation.



Dedicated VHF function keys including channel up/down on the fist microphone







Simrad VHF Antennas



Whip Antenna
Part No. AA000355



Antenna mount Stainless Steel
Part No. AA000224 SS
Stainless Steel 4-way adjustable antenna mount.

Whip Antenna
Part No. AA000358



Antenna Mount Heavy Duty Nylon
Part No. AA000223 NYL
White plastic 4-way adjustable antenna mount.

Masthead SS Antenna
Part No. AA000352 VA-3



30 metres Cable AA000401

Simrad Handheld VHF Simrad HT50/53 VHF radios have earned a strong reputation for their robust construction and dependable reliability. They are highly prized by coast guards, rescue services and defence agencies.

Simrad HT53/50

The Simrad HT53/50 Portable VHF with Speaker Microphone Connection is extremely easy to use and is built to last for years, even in the most extreme conditions at sea. HT53 and HT50 share all the same features, while HT53 is perfect when operation requires an external speaker microphone or headset.

HT53/50 Common Features

High Performance 5/1W handheld VHF radio

1,200mAh NiMH Battery Pack

Drop in Charger Base with AC Mains adaptor

Backlit display

Battery charge indicator and VHF mode indicator

Simple push button controls including Up/Down buttons for volume, squelch and channel selection

Keypad lock function

All International & Country specific Channels (Varies by region)

Weather channels (America Only)

Dual watch

Scan all & Scan Memory

Water and drop proof to one metre



Memory scan for easy monitoring of commonly used channels.

Simrad HT53 is supplied with a super high quality nickel-plated speaker microphone connector. The Microphone is optional.



Simrad EPIRBs are designed to alert search and rescue services in the event of an emergency. They do this by transmitting a coded message on the 406 MHz distress frequency relayed via satellite and earth stations to the nearest rescue co-ordination centre.

Simrad Common EPIRB Features

All four Simrad EPIRBs come with a built-in strobe light, a five-year non-hazardous Li-Ion battery for safe and easy transportation, a flexible whip antenna and include a Lanyard that can be tethered to a survival craft.

EG50:AUTO – Features

This model is our top of the line EPIRB. It includes an integral 16 channel GPS unit for the fastest possible emergency response time providing the rescue teams with accurate position data. The EG50:AUTO is also equipped with an Auto-Release-Bracket which deploys the EPIRB when the unit is submerged in 2-4 metres of water.

EG50:MAN - Features

The EG50:MAN is equipped with the same feature as the AUTO, however it has a Manual-Release-Bracket instead of the Auto-Release version.

EP50:AUTO - Features

This model includes the same Auto-Release-Bracket as the EG50:AUTO.

EP50:MAN - Features

The EP50:MAN is supplied with the same Manual-Release-Bracket as the EG50:AUTO.

Simrad EPIRBs utilize the latest state-of-the-art technology for maximum safety and reliability and are available in four different versions to match your exact requirements





Simrad SART SA50 is the smallest and lightest SART on the market, making it ideally suited for use on a pleasure boat liferaft where space is at a premium.



The Simrad SA50 Search and Rescue Transponder helps emergency rescue vessels and aircrafts to easily spot your liferaft on radar by electronically increasing your liferaft radar return, which could dramatically increase your chance of rescue should the unthinkable happen. The SA50 is the smallest and lightest SART on the market, making it ideally suited for use on a pleasure boat liferaft where space is at a premium. If you need to call your SA50 into action it is easy to prepare for use and can be activated in seconds, ensuring your liferaft is located as quickly as possible.

Once transmitting, the SA50 has an operating time of 8 hours, and 96 hours in standby. The sophisticated battery is non-hazardous and has a shelf-life of five years. The unit includes a

self-test feature which makes it easy to check that the SA50 is fully operational, so you can be confident that it is ready to activate at a moment's notice.

SA50 Features

Compact design for easy liferaft storage

Carry off or fit in liferaft

Automatic or manual activation

Mounting on pole increases range

Self-test functionality

Battery technology ensures low-cost ownership

Lanyard fits in base of unit

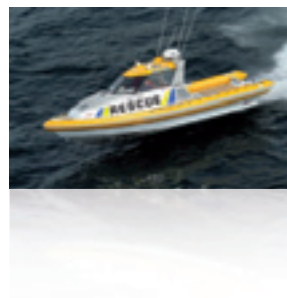
SA50 can be activated in seconds

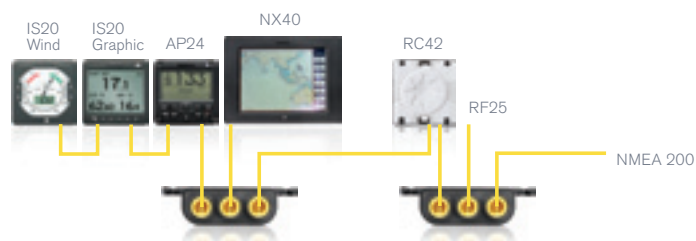


Help rescuers spot your liferaft on radar



Radar provides range and bearing to your liferaft





Daisy chain the IS20 instruments and sensors in any order.

Simrad SimNet Intelligent Marine Network is a unique marine electronics system. Over the last five years, it has proved to be one of the most reliable and easy to use networks in the marine industry.

SimNet makes data sharing and system control easier and more flexible than ever before.

The new generation of highly advanced IS20 instruments, AP24/28 autopilots, NX40/45 NavStations and GB40 Glass Bridge all utilise the full potential of SimNet, making data sharing and system control easier and more flexible than ever before. The secret behind SimNet is its simplicity.

The extended use of active SimNet sensors, e.g. depth/speed/temp sensor and active GPS antenna, not only makes installation easy, but also makes data available to all connected displays on the vessel. Even with the NavStation or Glass Bridge switched off you will still have GPS position, course and speed available on the instruments or autopilot display.

The highly reliable network is backward compatible - making it easy to add exciting new Simrad products to the SimNet installation already onboard. Other manufacturers' products can easily be connected to SimNet using the AT10 Universal NMEA0183 interface, and the new AT10HD ensures that high speed heading information is continuously relayed to radar, autopilot and other dynamic systems.

Simrad products certified for NMEA2000® can also be connected to a NMEA2000® backbone using one single SimNet to Micro-C drop cable, available in the SimNet accessory kit.

SimNet Features:

Easy to install – thin cables, small plugs

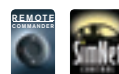
Plug & Play – no complicated set-up during installation

Unique ability to operate with multiple sources, e.g. two GPS receivers

Intelligent use of available data

Compatible with most equipment already onboard (NMEA0183, NMEA2000®)

Large collection of standard cables, connectors and other installation accessories



The cables are easy to route and require only a 10mm hole to pass through, a perfect solution for both retro-fit and new-builds. SimNet features automatic setup – just plug and play!



Simrad technical specification The full Simrad product range is available to view on our website, where you can check out all the technical specifications of each unit, read our user guides and build your entire marine electronics package.

GB65 Glass Bridge



Part No.	26058552/26063362	26058560/26063404	26058560/26063446
GB65 MONITORS: REAR, BRACKET OR FLANGE MOUNT	12"	15"	19"
Power supply 24Vdc	19.4W	32.6W	65W
Power supply 24Vdc	1024x768	1280x1024	1280x1024
Power supply 24Vdc	4.4 kg /9.9 lb	7.4 kg /16.4 lb	8.4 kg /18.7 lb
Additional weight	+0.5 kg /1.1 lb	+0.6 kg /1.3 lb	+0.6 kg /1.3 lb
SimNet/NMEA2000®	A/C*	A/C*	A/C*

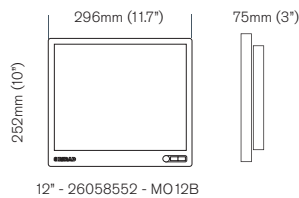
Part No.	26060335	26060350
GB65 GLASS BRIDGE SYSTEM WITH DVD MODULE	GB65 GlassBridge Computer	GB65 GlassBridge Computer with Radar Signal Interface Option
Power supply 24Vdc	240W max	
Weight	9 kg/20 lb	

GB65 MAIN COMPONENTS	Part.No
Cherry Keyboard	44176022
Logitech Marble Trackball	44172377
GS10 Active GPS-antenna	000-0126-00

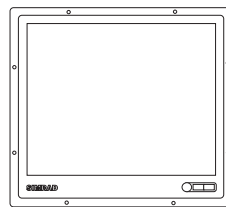
GB65 & BB80 RADAR SYSTEMS	700-2007 6kW Scanner	700-2008 12kW Scanner	700-2011 25kW Scanner
Power supply 24Vdc	80W	90W	130W
Output power	6kW	12kW	25kW
Radar box	RB60	RB60	RB60
Range	64NM	72NM	96NM
Antenna	4 ft. open scanner	6 ft. open scanner	6 ft. open scanner

GB65 System 26058487 includes computer and DVD

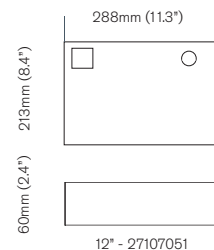
GB65 12" Monitor Rear/Bracket Mount



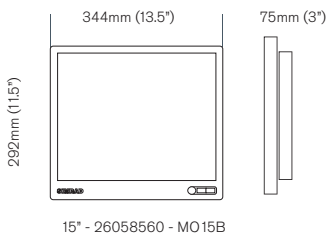
Flange version, all monitors, + 3mm on each side



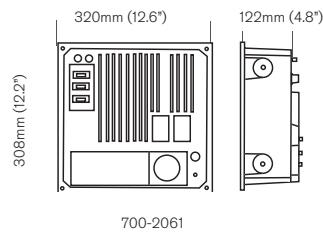
RB60 Radar Black Box



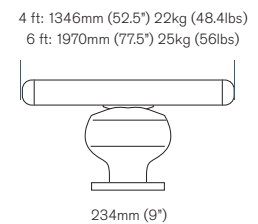
GB65 15" Monitor Rear/Bracket Mount



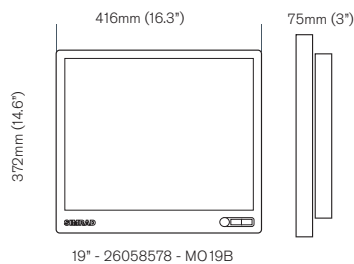
RA80/90 Radar Black Box



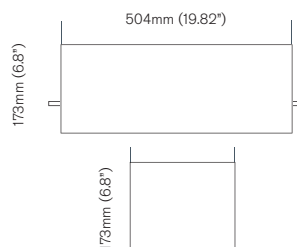
Open scanners



GB65 19" Monitor



GB65 Computer Unit



GB40



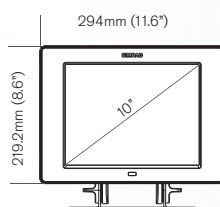
Part No.	DI10 000-0134-00	26063446
	DI15 000-0134-01	
MONITORS	DI10 AND DI15	MO19
Power Supply	10 – 32VDC	24VDC (21 – 32V DC)
Environment Protection	IPX6 (Note: MO19 when flush mounted)	IPX6 when flush mounted (from front only)
Resolution	DI10: 10.4" TFT SVGA bonded DI15: 15" TFT XGA bonded	19" TFT SXGA bonded
Video input	1 x Proprietary DVI Input	DVI-I, RGB, Composite and S-video
Power On/Off & Dimmer Control	Via OP30 Operation unit	+/- key on monitor
Part No.	AA010010	
NAVCOMPUTER	GB40 NC	
Power Supply	10 - 32VDC	
Environment Protection	IPX6	
Digital/Analog Video Outputs	1 x DVI-D (Digital only) 1 x DVI-I (DVI-Digital and Analog RGB)	
SimNet (NMEA2000)	1 Port	
Ethernet	1 Port	
USB 2.0	1 Port	
NMEA0183	1 x In/Out Port	
Audio Out	Line out (Stereo)	
Alarm output	< 250mA, 30VDC	
Speed log/temp.	From SimNet or via Echo sounder box	
Part No.	000-0120-61	
KEYPAD	SPEC. OP30 OPERATION UNIT	
Interface	SimNet	
Keypad Beeper	>80dBA@0.5m	
Backlight	White or Red (Night)	
Environment Protection	IPX6	

GB40 GlassBridge Systems

GB40-10	10" GB40 System
GB40-15	15" GB40 System
GB40-19	19" GB40 System

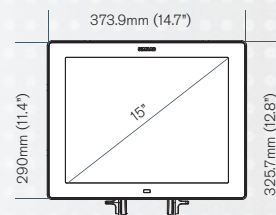
Systems include NavComputer, DI10 or DI15 Display, or MO19 Display & OP30.
Order GS10 GPS Separately.

GB40 10" Monitors



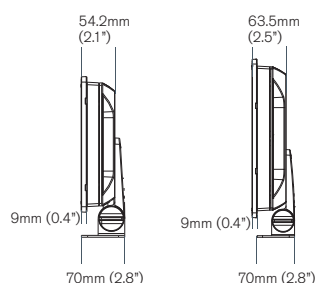
10" - 000-0134-00

GB40 15" Monitors

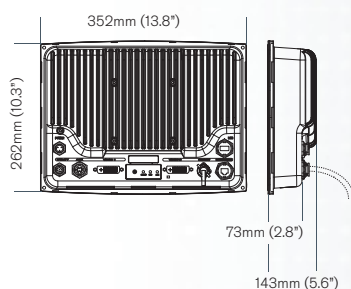


15" - 000-0134-01

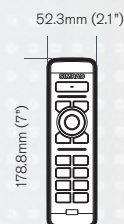
GB40 10" / 15" sideviews



GB40 NavComputer



OP30



NX40/NX45



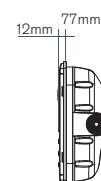
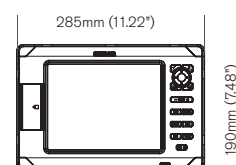
Part No.	NX40 w/GPS Antenna AA010019	NX45 AA010017
Part No.	NX40 without GPS Antenna AA010020	NX45 AA010018
Total size (HxWxD)	190 x 285 x 75 mm 7.48"x11.22"x2.95	256 x 385 x 78 mm 10.08"x15.16"x3.07"
Display size (diagonal)	214mm (8.4")	307mm (12.1")
Display type and resolution	TFT color, 800x600 pixels	TFT color, 800x600 pixels
Backlight	Display and keys	
Supply voltage	10.5 to 32V DC	
Current consumption @13.8V	350mA without backlight, Max 1A with full backlight	
External alarm output	Switch to ground, max 30V DC, 200mA	
Operating temperature	0°C to 50°C (32°F to 122°F)	
Environment	IPx6 / IPx7/CFR46 (Chart holder and connectors in place)	
Chart slots	2 SD slots	
Chart card	C-MAP™ SD Card (NT, NT+ or NT MAX)	
Build in Chart	32MB world map	
User Data Card	SD Card	
Waypoints	3000 with name max. 8 charters	
Routes	25 with up to 50 points each	
Tracks	Max: 1 x 2000 points & 4 x 500 points	
Chart scales	Chart: 0.05 to 4096 nm, Plotter mode down to 0.01 nm	
Echo sounder power	Up to 600W / 1kW (Auto detects transducers max power)	
Echo sounder frequency	50kHz / 200kHz	
Sounder transducer	Optional – see Navico selection	
Echo sounder range	0.6 m (2ft) to 1000 m (3300 ft)	
Temperature	0°C to 37.7°C (32°F to 99.9°F), resolution 0.1° (Optional transducer)	
Speed	Paddle wheel max. 50kn (Optional transducer)	
SimNet	Via supplied Active T-joiner	
NMEA2000®	Pending certification	
NMEA0183	In: BWR, DPT, GGA, GLL, GSA, GSV, HDG, HDM, HDT, MTW, MWV, RMC, VHW, VTG, DBT. Out: APA, APB, BWR, DBT, DPT, GGA, GLL, GSA, GSV, RMB, RMC, MTW, VHW, VLW, VTG, XTE	
Video input	BNC connector, 75 ohm, PAL and NTSC formats	
SmartCraft™	Single or Twin Gateway (Optional kit)	
Flow rate sensor:	Gasoline Min: 5 liters/hour and Max. 130 liters/hour (optional: Single or Twin sensor kit)	



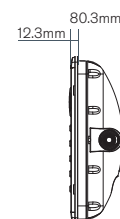
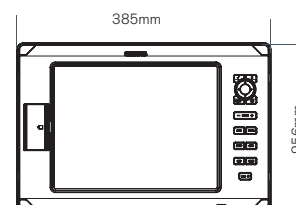
AI50/NAIS300

Part No.	00-0135-00	000-0135-03/04
	AI50	NAIS 300
Power supply	10.8V to 15.6V	10.8 to 15.6V
Power consumption	< 1A	< 0.5A
Receiver type	Dual TDMA (shared DSC)	Dual TDMA (shared DSC)
Receiver sensitivity	< -107dBm for 20% PER	< -107dBm for 20% PER
Transmit power	2 W	2 W
Type approval	IEC62287-1	IEC62287-1
AIS Class	Class B for use on non-SOLAS craft	Class B for use on non-SOLAS craft
GPS	Integral 16 channel receiver	Integral 16 channel receiver
Dimensions with bracket	20 x 133x 77mm / 7.9x 5.2x3"	n/a
Dimensions without bracket	172x 115x 77mm / 6.8 x 4.5x 3"	210x167x735mm / 8.27x6.6x2.9"
Weight	1kg	0.65kg
EMC	IEC60945	IEC60945
Temperature range	-15°C to +55°C	-15°C to +55°C
Waterproof	IP67	IP67
Backlighting	Keypad LED (red or white)	n/a
Display type	VGA TFT 102mm (4in)	n/a
Connectors	VHF Antenna PL259 / GPS Antenna SMB	
Interfaces	NMEA0183 Out: 38kbaud VDM, VDO, RMC, ARL In: 38kbaud for configuration and testing only SimNet/NMEA2000 Network load 1	

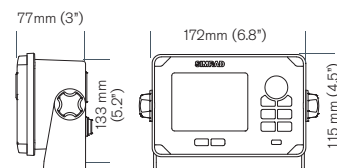
NX40



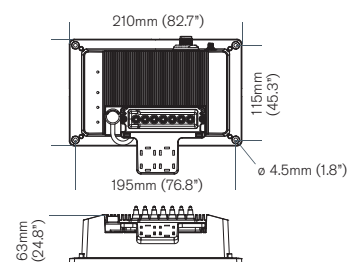
NX45



AI50



NAIS300



AP50



Part No. 20214045

MULTI-LANGUAGE DISPLAY

Transflective matrix LCD 102x83mm (4"x3.3")
 Analogue presentation
 Rudder angle bar graph
 Adjustable backlight
 Dedicated mode keys
 Course change, rotary knob
 Course change keys, $\pm 1/5/10^\circ$ Dedicated/Selectable D
 Heading capture in turns

WORK MODE

DODGE, resume of previous heading
 U-turn, C-turn
 NFU/FU Power steering
 Automatic tuning (Autotune)
 Seastate and parameter speed control (Automatic/Manual)
 Rudder deadband adjust (Adaptive/Manual)
 Rudder angle calibration
 Multiple stations
 Remote station lock
 Master station operation
 Solenoid or reversible motor control interface
 Galvanic isolated solenoid or analogue control (AD50) interface
 Prepared for Thrusters' Control
 Multiple compass input
 Multiple NMEA 0183 input/output
 System selector interface (manual/automatic steering)
 Off course alarm
 Compass difference alarm
 System monitoring alarms
 Remote alarm station interface option (NAUT-OSV class)
 IMO - High Speed - Wheelmark - USCG approved
 No drift



WR20 Remote Commander

Part No. WR20

Weight: 150 gram (0.33 lbs)
 Waterproof: IP67
 Display Size: 35mm x 25mm (1.4"x0.98"), 128 x 64 dots
 Backlight: Selectable red or white
 Battery Capacity: 1600mAh
 Battery Type: Rechargeable Li-Ion
 Wireless System: Bluetooth Class 1
 Environment: -10oC to +55oC

RECHARGE CRADLE

Supply voltage: 12V (10.8-16Vdc)

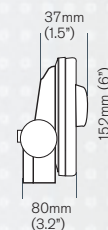
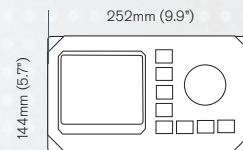
BASE STATION

Waterproof: IP67
 Wireless System: Bluetooth Class 1
 Power Supply: Direct from SimNet Bus
 Connectors: 2 x SimNet Ports, 1 x VHF Port
 Environment: -10oC to +55oC

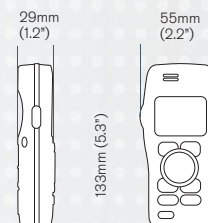
ACCESSORIES

VHF Cable*: EXPC05 (5m) or EXPC20 (20m)
 Mains adaptor: MAR50 (for charging handset from mains voltage)
 SimNet Approved
 NMEA2000® is pending approval

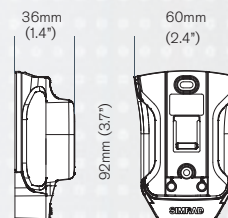
AP50



WR20 RemoteCommander



WR20 Battery Charger



- * Required to connect base station to RS80 series VHF Installation
- Simple installation requiring just a single cable running from the SimNet network to the base station and VHF cable from VHF black box.
- The charging cradle operates from any convenient 12V supply.

AP24 and AP28 Autopilot System



Part No.	AP24 22096267	AP28 22096366
MULTI-LANGUAGE DISPLAY		
Transflective matrix LCD display AP24	130 x 79 pixels	
Transflective matrix LCD display AP28	130 x 104 pixels	
Standby, Auto, + soft keys	AP24	
Dedicated mode keys	AP28	
Rotary course knob	AP28	
1° keys Dedicated	AP24	
1° keys Selectable	AP28	
10° keys Dedicated	AP24	
10° keys Selectable	AP28	

INSTRUMENT DATA PAGES

Analogue graphics	AP28
Remote station lock	✓
Button power steering	✓
Follow-Up power steering	AP28
Rudder angle bar graph	✓
DODGE: Return to last or new heading	✓
Heading capture	✓
Automatic turn patterns	✓
Depth Contour Tracking DCT™	✓
WR20 Remote Commander compatible	✓
Advanced Wind Steering	✓
Automatic Tack and Gybe inhibit	✓
Wind Trim adjust	✓
Automatic adjust of steering parameters	✓
Response control	✓
Boat type preset	✓
Auto tune	✓
Multiple stations	✓
Off course alarm	✓
Wind shift alarm	✓
Shallow alarm	✓
Overload alarm	✓
SimNet interface and control	✓
Virtual Rudder Feedback VRF™	✓
Volvo Penta IPS interface	✓
Multiple data source input	✓
Multiple NMEA0183 interface via AT10	✓

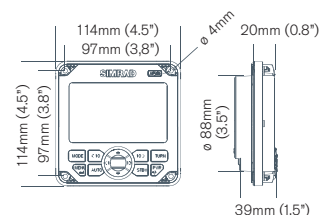
AUTOPILOT COMPUTER SPECIFICATIONS	AC12	AC42
Supply voltage	12Vdc or 24Vdc (10-31Vdc)	12Vdc or 24Vdc (10-31Vdc)
Motor current continuous/peak	8/16 Amps	30/50 Amps
Clutch/bypass current	3 Amps	3 Amps
Solenoid output	Yes	No
Weight Kg (lbs)	1.3 (2.9)	2.8 (6.2)

Drive unit specifications

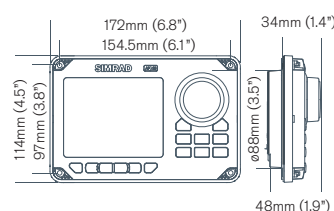


Part No.	RPU80 21116165	RPU160 21118203	RPU300 21118211	MSD50 21119391	SD10 21120001
DRIVE SELECTION GUIDE (SEE NOTES)					
Boat Length	35' / 10.7m	50' / 15.24	70' / 21.3m	39' / 11.9m	7' / 11.3m
Boat Displacement					7,500kg / 16,500lbs
Ram Capacity, cm ³	80-200	160-400	300-700		
Ram Capacity, inch ³	4.9-12.2	9.8-24.4	18.3-45.8		
Fits with an Autopilot Computer	AC12	AC42	AC42	AC12	AC12
System Kits	AP24/AP28 & VRF	AP24/AP28 & VRF	AP24/AP28 & VRF	AP24/AP28	AP24
Tiller Arm Mounting Radius					250mm / 10"
Stroke					300mm / 12"

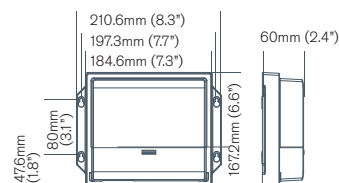
AP24



AP28






AC12/AC42



SimNet

SIMKIT-1	SimNet Starter Kit
SIMKIT-2	SimNet Starter Kit with one AT10 NMEA0183 interface
24005829	SimNet Cable 0.3M (1 foot)
24005837	SimNet Cable 2M (6.6 feet)
24005845	SimNet Cable 5M (16.6 feet)
24005852	SimNet Cable 10M (33 feet)
24005910	SimNet Power Cable w/o terminator 2M (6.6 feet)
24005902	SimNet Power Cable w/terminator 2M (6.6 feet)
24005860	SimNet 3 Prong T-Joiner
24006298	SimNet 7 Prong Multi-Joiner
24005894	SimNet Termination Plug
44172260	SimNet Joiner Yellow w/o Terminator
44172278	SimNet Joiner Red w/ Terminator
24006306	SimNet Bulkhead T-Connector
24005886	SimNet Protection Plug
24005878	SimNet Cable Gland
24005928	SimNet cable protection cap
24006413	Micro-C female to SimNet 4M (13')
24006199	Micro-C female cable to SimNet
24005729	SimNet cable to Micro-C male
24005936	AT10 two way general NMEA0183 to SimNet Converter
24006694	TBD AT10HD two way NMEA0183 Heading data only to SimNet Converter

			
DD15	HLD350	HLD2000L	HLD2000LD
21119896	21113303	21113360	21113402
45' / 13.7m	39' / 11.9m	52' / 15.8m	65' / 20m
14,000kg / 31,000lbs	10,000kg / 22,000lbs	20,000kg / 44,000lbs	35,000kg / 77,000lbs
AC12	AC12	AC42	AC42
AP24/28	AP24/28	AP24/28	AP28
200-250mm / 8-10"	175mm / 7" 300mm / 12"	300mm / 12"	
	200mm / 8"	340mm / 13.6"	340mm/136"

Accessories, Fitting kits and Notes for Driver Units

MSD50

Most engines. See installation manual for details. Contains internal rudder reference

SD10

All fittings included as standard, including built in rudder reference

DD15

Additional drag link required. 3 lengths available to suit most installations

HLD350

Available as "split versions" with the pump mounted separately

HLD2000L

Available as "split versions" with the pump mounted separately

Notes on Drive Selection

- Ensure that you use the **Laden Weight of the boat** (rule of thumb 1.2 x Light or Empty Displacement)
- Where possible, use the **bold** figures as your main guide. Boat length, in *italics* is for guidance

Tiller pilots



Part No.	TP10	TP22	TP32
----------	------	------	------

Max Boat Length TP10: 32.8' (10m)
Max Boat Length TP22: 36.1' (11m)
Max Boat Length TP32: 39.4' (12m)
Max fully laden boat displacement:
TP10: 3,700kg (8,140lbs)
TP22: 5,000 kgs (11,000lbs)
TP32: 6,300 kbs (13,860lbs)
Drive System TP10/TP22 Screw thread
Drive System TP32 Recirculating
Power Supply 12Vdc (10.8 - 16Vdc)
Mounting selectable, port or starboard
Temperature operating/storage -10° to +55°C
Fluxgate compass
Alarm, audible and visual
NMEA0183 input
SimNet Control
Steer to wind
Steer to GPS
Auto Tack
Storm proof
Intelligent steering action
Auto seastate
Auto trim
Adjustable gain 1-9 levels
Night illumination
Non volatile memory
Remote control option
Operating stroke 250mm (10")

TILLER PILOT INSTALLATION ACCESSORIES



Tiller Brackets	Pedestal Bracket	Push Rod Extensions	Cantilever bracket
TB30 – Part #TB30 30mm (1.2")	PB30 – Part #PB30 30mm (1.2")	PRE30 – Part #PRE30 30mm (1.2")	CB1 – part # Adjustable 135 to 240mm (5.3 to 9.4")
TB60 – Part #TB60 60mm (2.4")	PB60 – Part #PB30 60mm (2.4")	PRE60 – Part #PRE60 60mm (2.4")	
TB90 – Part #TB90 90mm (3.5")	PB90 – Part #PB30 90mm (3.5")	PRE90 – Part #PRE90 90mm (3.5")	
TB120 – Part #TB120 120mm (4.7")		PRE120 – Part #PRE120 120mm (4.7")	
		PRE150 150mm (5.9")	

TILLERPILOT INSTALLATION

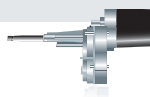
The versatile Tillerpilot installation accessories allow the pilot to be installed on almost any sailing yacht. Work out the installation requirements from the installation dimensions, remembering that the pilot must operate in a horizontal position. Then look at the Installation accessories table on the specification page to order the right part when you buy the pilot.



AP12R/14R Powerpilots

Part No.	AP12R	AP14R
----------	-------	-------

Ideal Boat Length 30-35' (9-11m), Max Boat Length 40' (12m)
Max Fully Laden Boat Displacement 9000 kg/20,000 lbs
Power supply 12Vdc (10.8 -16Vdc)
Rudder drive Proportional / Autotrim
Cable Drive System
AP12R Surface Mounting
AP14R Bracket/handheld Mounting
Temperature operating/storage -10° to +55°C
Fluxgate compass
Alarm, audible and visual
Steer to GPS-Nav Lock
Storm proof
Auto sea state
Auto trim
Adjustable gain 1-9 levels
Night illumination
Non volatile memory
Buttons: Tactile silicon pads
AP12R Display: LED Indication/ AP14R Display: LCD Display

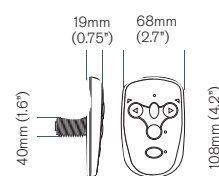


AP12R/14R Rotary drive

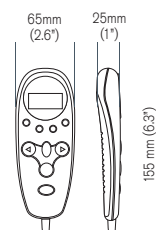
Part No.	AP12R	AP14R
----------	-------	-------

Power supply: 12Vdc (10.8-16Vdc)
Consumption average: 0.7 Amps typical
Linear thrust: 175 kg (385 lbs)
Torque: Max 9.5Nm (170 lb/in)
No load speed: 15 rpm

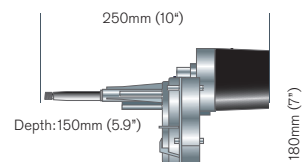
AP12R



AP14R



AP12R/14R Rotary Drive



Radar Models for GB40/NX40/45 series

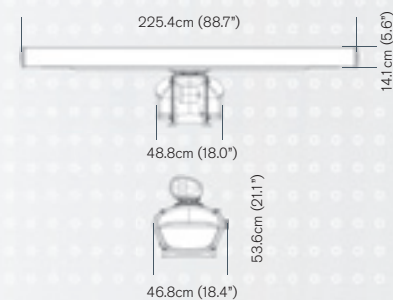
Part No.	AA010028	AA010027	AA010026	AA010025	AA010024
Physical / Differences	25 kW 7' / 2.25m	10 kW 6' / 1.88m	6 kW 4' / 1.28m	4 kW 24" / 620 mm	2 kW 18" / 450 mm
Weight with antenna - no cable	54kg /119lbs	35kg /77lbs	29kg / 64lbs	10 kg / 22 lbs	4.2kg / 9lbs 6 kg / 13.2 lbs with cable
Cable Length	20 meters standard 30 meters optional	20 meters standard 30 meters optional	20 meters only	15 meter standard 20 meters optional	15 meter standard 20 meters optional
Dimensions	L2254 x W458 x H536 mm L88.7 x W18.0 x H21.1"	L1880 x W344 x H448 mm L74.0 x W13.5 x H17.6"	L1285 x W344 x H448 mm L50.6 x W13.5 x H17.6"	620 diameter x H280 mm 24.4 diameter x H11.0"	450 diameter x H227 mm 17.7 diameter x H8.9"
Max. Range Scale (nm)	96 nm	72 nm	64 nm	48 nm	24 nm
Horizontal beam width	1.0°	1.2°	1.8°	4.0°	5.2°
Vertical beam width	20°	20°	20°	25°	30°
Noise Figure (average)	6 dB	6 dB	6 dB	6 dB	7 dB
DC Voltage	21.6 V - 31.2 V	21.6 V - 41.6 V	10.8 V - 42 V	10.8 V - 42 V	10.8 V - 15.6 V
Power Consumption	180 W (Max)	250 W (Max)	120 W (Max)	30 W	25 W
Rotation Speed	24 RPM	27 RPM	27 RPM	27 RPM	27 RPM
Wind Speed (max)	100 knots	100 knots	70 knots	70 knots	70 knots
Pulse Length / PRF	0.07µs/2250 Hz 0.2 µs/2250 Hz 0.4 µs/1400 Hz 0.8 µs/750 Hz 1.0 µs/650 Hz 1.2 µs/510 Hz	0.08 µs/2250 Hz 0.25 µs/1700 Hz 0.5 µs/1200 Hz 1.0 µs/650 Hz	0.08 µs/2250 Hz 0.25 µs/1700 Hz 0.5 µs/1200 Hz 1.0 µs/650 Hz	0.08 µs/2250 Hz 0.25 µs/1700 Hz 0.5 µs/1200 Hz 1.0 µs/650 Hz	0.08 µs/2250 Hz 0.3 µs/1200 Hz 0.8 µs/600 Hz
Sidelobe Levels (less than +/- 10° from main lobe)	-26dB max	-26dB max	-23dB max	-21dB max	-21dB max
Receiver Type and Bandwidth	LOG 20Mhz - Short 6Mhz - Med 3Mhz - Long	LOG 20Mhz - Short 6Mhz - Med 3Mhz - Long	LOG 20Mhz - Short 6Mhz - Med 3Mhz - Long	LOG 20Mhz - Short 6Mhz - Med 3Mhz - Long	LINEAR 10Mhz - Short 3Mhz - Med, Long
Processor Weight	0.9kg /1.9lb	0.9kg /1.9lb	0.9kg /1.9lb	0.9kg /1.9lb	0.9kg /1.9lb
Processor Dimensions	L197 x W141 x H57mm L7.77 x W5.55 x H2.24"	L197 x W141 x H57mm L7.77 x W5.55 x H2.24"	L197 x W141 x H57mm L7.77 x W5.55 x H2.24"	L197 x W141 x H57mm L7.77 x W5.55 x H2.24"	L197 x W141 x H57mm L7.77 x W5.55 x H2.24"

* The 25 kW radar scanner uses less power than the 10 kW because the 25 kW uses a more efficient motor that operates over a narrower voltage range. For 2kw/4kw/6kw order a kit; for 10kw/25kw order a radar and processor unit separately. 2kw: DX42S-1 radar kit; 4kw: DX64S-1 radar kit; 6kw: TX06S-1 radar kit.

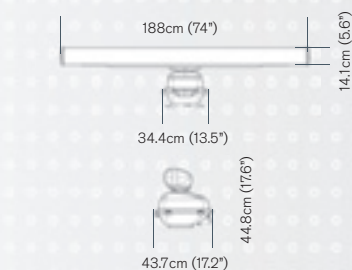
Radar Models for GB65 series

Power supply 24Vdc	80W	90W	130W
Output power	6kW	12kW	25kW
Radar box	RB60	RB60	RB60
Range	64NM	72NM	96NM
Antenna	4 ft. open scanner	6 ft. open scanner	6 ft. open scanner

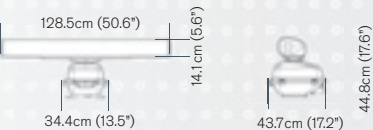
25 KW Scanner



10 KW Scanner



6 KW Scanner



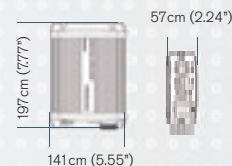
4 KW Scanner



2 KW Scanner



Radar Processor



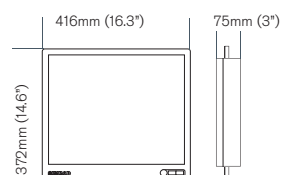


Radars Models for BB80 series

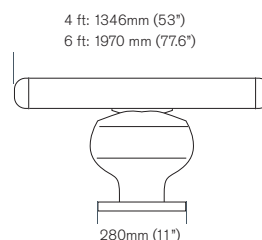
Part No.	700-2061	700-2062
PHYSICAL / DIFFERENCES		
Physical / Differences	BB80 series Non-IMO	RA90-IMO series Meets July 2008 IMO Regulations – MSC192(79) with certified 19" display
Scanners	6/12/25kW	12/25kW - performance monitor
Water Protection	IPX6	IPX6
Temperature	-25°C to +55°C	-25°C to +55°C
Processor Box	BB80	BB80BP
Antennas	4', 6', or 9' (25kW only)	6' only
Weight with antenna - no cable	6kW: 4' - 22kg/49lbs 12kW: 4' - 23kg/51 lbs 6' - 25kg/56lbs 25kW: 6' - 29kg/64lbs 9' - 33kg/73lbs	12kW: 6' - 25kg/56lbs 25kW: 6' - 29kg/64lbs
Cable Length	15/20/30/50/100 meters	20/30/50/100 meters
Dimensions (mm/in)	6kW: L1346 x W390 x H450mm 4' L53.0 x W15.4 x H17.7" 12kW: L1970 x W390 x H450mm 6' L77.6 x W15.4 x H17.7" 25kW: L2740 x W470 x H450mm 9' L107.8 x W18.5 x H17.7"	12kW: L1970 x W390 x H450mm 6' L77.6 x W15.4 x H17.7" 25kW: L1970 x W470 x H450mm 6' L77.6 x W18.5 x H17.7"
Max. Range Scale (nm)	64/72/96 nm	72/96 nm
Horizontal beam width	1.8°/1.2°/0.8°	1.2°
Vertical beam width	22°/22°/25°	22°
AIS Targets	Total 50 – Optional PCB	Total 254 – active or sleeping Built-in
ATA – automatic acquisition	10 targets – up to 5 automatic optional PCB	100 targets – auto or manual Built-in
Gyro Log Interface	Yes - optional PCB	Yes – optional PCB
DC Voltage	6/12kW: 10.8 V – 41.8 V 25kW: 21.6 V – 41.6 V	12kW: 10.8 V – 41.8 V 25kW: 21.6 V – 41.6 V
Power Consumption	6kW: 80 W or less 12kW: 90 W or less 25kW: 130 W or less	12kW: 90 W or less 25kW: 130 W or less
Rotation Speed	24 RPM	24 RPM
Wind Speed (max)	100 knots	100 knots
Noise Figure	6.5dB or less	6.5dB or less
Pulse Length / PRF	0.08μs / 2000 Hz 0.3 μs / 1300 Hz 0.6 μs / 800 Hz 1.2 μs / 450 Hz	0.08μs / 2000 Hz 0.3 μs / 1300 Hz 0.6 μs / 800 Hz 1.2 μs / 450 Hz
Receiver Type and Bandwidth	LOG 15Mhz – Short. M1 3Mhz – M2, Long	LOG 15Mhz – Short. M1 3Mhz – M2, Long
Processor	5.5kg/12.1lbs L320 x W308 x H122 mm L12.6 x W12.1 x H4.8"	5.5kg/12.1 Lbs L320 x W308 x H122mm L12.6 x W12.1 x H4.8"
Display – Hi Brite TFT (size with no bracket)	19" or External	1280 x 1024 pixel W416 x H372 x D75 mm W16.4 x H12.1 x D2.9 in.
Keyboard	2kg/4.4lbs L354 x W130 x H70mm L13.9 x W5.1 x H2.8"	2kg/4.4 Lbs L354 x W130 x H70 mm L13.9 x W5.1 x H2.8"

Contact Simrad for availability date for new IMO version.

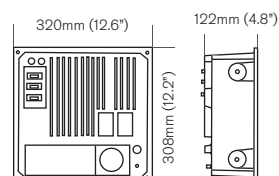
19" GB display unit



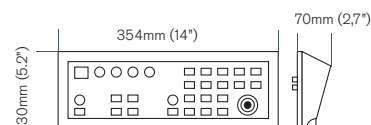
Scanner



Processor unit



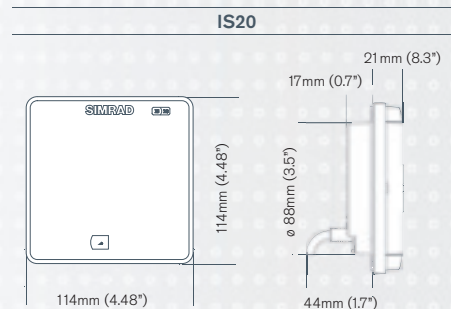
Operation unit



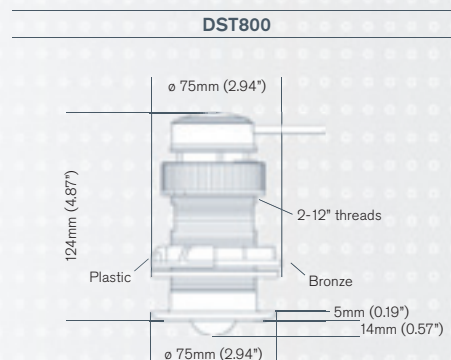
IS20 Instruments



Part No.	22098420	22095582	22095558	22095921	22095939	22095996
IS20	COMBI	GRAPHIC	WIND	TACK	COMPASS	RUDDER
NMEA0183 Interface (input only)		▪	▪	▪	▪	▪
Display Backlighting	Number of levels	9	9	9	9	9
Backlighting Color	White and Red	▪	▪	▪	▪	▪
Backlight Adjust	Local or remote via network	▪	▪	▪	▪	▪
System Alarms	Shallow, deep, anchor, wind speed, wind shift, boat speed, data missing	▪	▪	▪	▪	▪
Power Requirement	8 - 16V, 45 - 100 mA	▪	▪	▪	▪	▪
Environmental Rating	IP66 - Protection from the front	▪	▪	▪	▪	▪
	IP44 - Protection from the rear	▪	▪	▪	▪	▪
Temperature Range	Operating: 0°C to 55°C (+32°F to +130°F)	▪	▪	▪	▪	▪
	Stored: -30°C to 80°C (-22°F to +176°F)	▪	▪	▪	▪	▪
Segments per character	Dot matrix	Dot matrix	7	7	7	7
Optional Bracket Mount	▪	▪	▪	▪	▪	▪



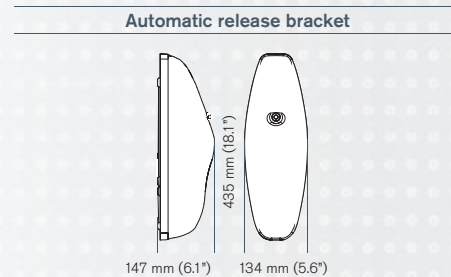
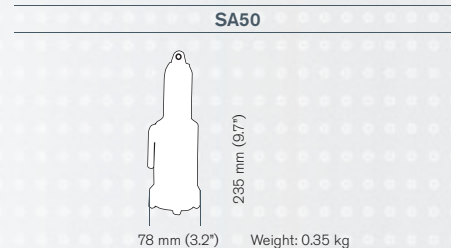
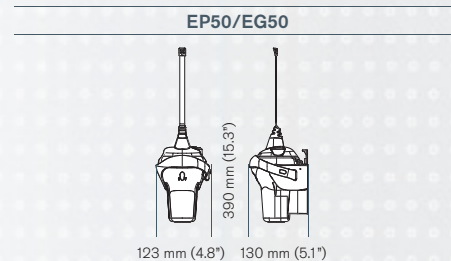
* Dimensions are the same for all the IS20 instruments



EP50/EG50 EPIRB & SA50 SART



Part No.	EP50:AUTO/EP50:MAN	EG50:AUTO/EG50:MAN	SA50
	EPIRB		SART
Operating temperature range	-20°C to +55°C (class2)		-20°C to +55°C
Drop proof	20m into water		20m into water
Battery shelf life	5 yrs		5 yrs
Battery operating time	48 hrs minimum		96 hrs minimum in standby
Type approval standards	MINO resolution A.810 (19), MSC56(66), A.662(16), A.694(17) COSPAS-SARSAT T.007, T.001 IEC6 1097-2, IEC60945		IMO resolution A.802(19), EN61097-1, EN60945



VHF



	HT50/53 VHF	RT64 VHF	RD68 dVHF	RS81 VHF	RS82 dVHF
GENERAL					
Power supply	1200mAh NimH	10.8 to 15.6V dc	10.8 to 15.6V dc	10.8 to 15.6V dc	10.8 to 15.6V dc
Power consumption	RX 0.2A, TX 1.5A (5W)	RX 0.18, TX 5.5A max	RX 0.18, TX 5.5A max	RX 0.18, TX 5.5A max	RX 0.18, TX 5.5A max
Modes: Simplex/Semi-Duplex	▪	▪	▪	▪	▪
Channels: All international, WX US, special regional	▪	▪	▪	▪	▪
Type approval	EN301 178	EN301 025/EN300 698	EN301 025/EN300 698	EN301 025/EN300 698	EN301 025/EN300 698
Weight	0.4 kg	1.4 kg	1.4 kg	0.5 kg	0.45 kg
TRANSMITTER					
Power output	High 5W - Low 1W	High 25W - Low 1W	High 25W - Low 1W	High 25W - Low 1W	High 25W - Low 1W
Spurious emissions	<-80dBc (25W)	<-80dBc (25W)	<-80dBc (25W)	<-80dBc (25W)	<-80dBc (25W)
Modulation Depth	+/- 5kHz max	+/- 5kHz max	+/- 5kHz max	+/- 5kHz max	+/- 5kHz max
RECEIVER					
Sensitivity	<1µV EMF /20dB SINAD	<1µV EMF /20dB SINAD	<1µV EMF /20dB SINAD	<1µV/20dB SINAD	<1µV /20dB SINAD
Adjacent Channel Selectivity/	>70dB	>70dB	>70dB	>70dB	>70dB
Intermodulation Rejection					
Hum and Noise	<-40dB	<-40dB	<-40dB	<-40dB	<-40dB
DSC WATCH RECEIVER (CHANNEL 70)					
Frequency		156.525MHz	156.525MHz	156.525MHz	156.525MHz
Sensitivity		<1µV for 10 ⁻² BER	<1µV for 10 ⁻² BER	<1µV for 10 ⁻² BER	<1µV for 10 ⁻² BER
Environmental: -10°C to 55°C	▪	▪	▪	▪	▪
Construction: Robust die cast aluminum enclosure		▪	▪	▪	▪
EMC: EN60945	▪	▪	▪	▪	▪
PERIPHERAL INTERFACE					
GPS interface: NMEA0183			▪	▪	▪
Input			GLL, GGA, RMC		GLL, RMC, ZDA
SimNet/NMEA2000®				A/C*	A/C*



RS86dVHF	RS87dVHF
10.8 to 15.6V dc	10.8 to 15.6V dc
RX 0.45, TX 5.5A max	RX 0.45, TX 5.5A max
▪	▪
▪	▪
EN301 025/EN300 698	EN301 025/EN300 698
0.6 kg	0.45 kg
High 25W - Low 1W	High 25W - Low 1W
<-80dBc (25W)	<-80dBc (25W)
+/- 5kHz max	+/- 5kHz max
<1µV EMF /20dB SINAD	<1µV EMF /20dB SINAD
>70dB	>70dB
<-40dB	<-40dB
156.525MHz	156.525MHz
<1µV for 10 ⁻² BER	<1µV for 10 ⁻² BER
▪	▪
▪	▪
▪	▪
▪	▪
GLL, RMC, ZDA	GLL, RMC, ZDA
A/C*	A/C*

* A=SimNet Approved
C=NMEA2000® certified

Note: Local radio regulations may restrict the approval for use of some models in certain countries.
Please consult your Simrad national distributor or local dealer for more details about the other fixed models.
Specifications are subject to change without notice.

Communication terms and descriptions

DIST

Pressing the DIST key activates the DSC emergency calling sequence.

CH16

Quick selection of the main voice calling channel can be made using the CH16 key.

VHF

Very High Frequency - the part of the radio spectrum dedicated to marine use.

Class D

Is the standard for voluntary fit DSC radios, providing Distress, All Ships, Individual and Group call facilities.

SatCom

Satellite communication covers greater areas of the world's oceans with voice, fax and data.

GMDSS

Global Maritime Distress and Safety System - Will increase your chance of early rescue should the unthinkable happen.

DSC

Digital Selective Calling.

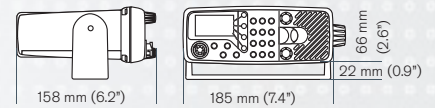
Class B

Full featured DSC control for commercial fit applications. Meets IMO carriage requirements.

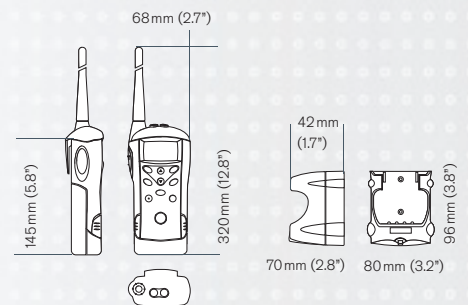


Digital VHF from Simrad.

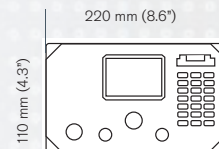
RT64/RD68



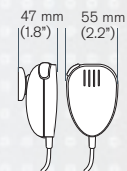
HT50/HT53



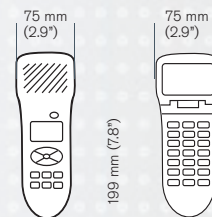
RS68



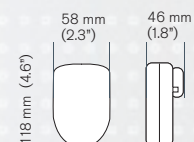
RD68

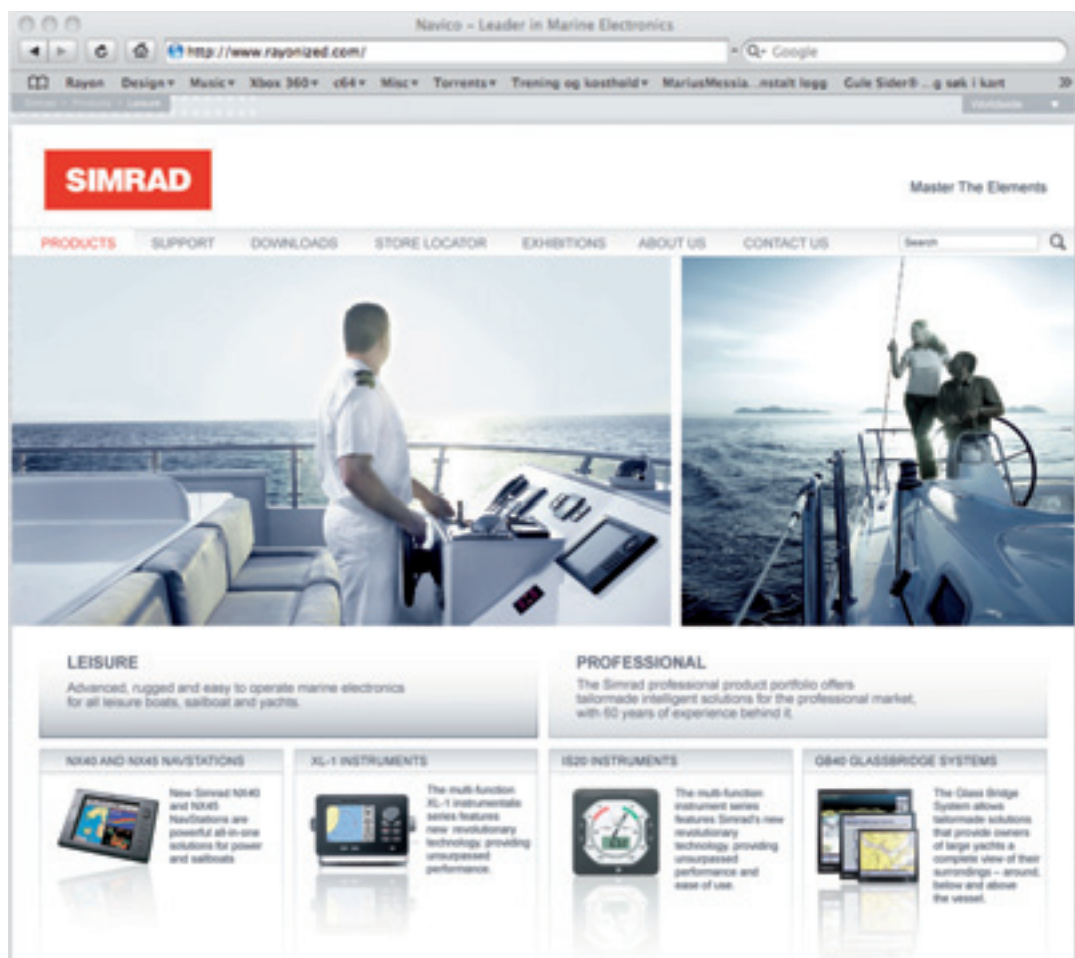


RS81 VHF RS82/87 dVHF



RS86 Fistmic





Simrad Master the elements, starting from your desktop. Visit www.simrad-yachting.com for our latest news and all the information you need about Simrad's products and services in both the professional and leisure sectors.

The Simrad website gives you easy access to product information, technical specifications and user manuals, while a FAQ area provides handy information to help you get the most from all your Simrad systems. The website features product videos so that you can see Simrad equipment in action and software downloads to ensure that your systems are right up-to-date.

The best place to locate your nearest distributor or dealer is to visit the online distributor locator that provides details of local Simrad specialists around the world. Use the Google map facility to get directions to your nearest supplier.

Sign up online to receive the Simrad newsletter, published regularly, that informs you of all the latest product updates, event news and handy tips on how to get the best from your entire suite of Simrad marine instrumentation.

The Simrad website is a hub for customer support, and content is available to view in any of the following languages: English, Norwegian, Italian, Spanish and German, with further languages to come on stream soon.



Find a Simrad distributor close to you from our global network listing.



Find all the information you need about the Simrad product range including technical specifications and manuals.





Sales & service worldwide

EUROPE/MIDDLE EAST/AFRICA

ALGERIA

Algerian Technical
Services & Systems
Lotissement El Bina No. 142
Dely Ibrahim
16302 Alger
Tel: +213 21 37 05 56

ANGOLA

JEMBAS-Assistência Técnica
Liimitada, Largo Do Soweto 88,
Luanda
Tel: +244 222 637 000

BENELUX

Simnav B.V.
Van Hennaertweg 17a
2952 CA Alblasserdam
Tel: +31 78 6921900

CROATIA

Almar d.o.o.
Porec – Kamenarija 12
52452 Funtana
Tel: +385 52 445 005

DENMARK

Navico Denmark
Balderbuen 53
2640 Hedehusene
Tel: +45 43 44 49 00

EGYPT

Marcom Trade
48 Ismail Helmy st
21615 Smouha Alex
Tel: +20 3576 6551

ESTONIA

Admiral Trade OÜ
Regati 1
11911 Tallinn
Tel: +372 639 89 46

FINLAND

Oy-Maritim AB
P.O.Box 46, Veneentekijantie 1
00210 Helsinki
Tel: + 358 207 65 180

AT - Marine OY

Mesikukantie 16
01300 Vantaa Helsinki
Tel: +358 (0)9 5494 2600

FRANCE

Navico France S.A.
Parc d'Activités Ragon
23 Avenue Pasteur
44 119 Treillieres
Tel: +33 2 28 01 23 01

GERMANY/AUSTRIA

Navico GmbH
Carl-Friedrich-Gauss Strasse 2
24837 Schleswig
Tel: +49 4621 96130
www.simrad-yachting.de
www.simrad-yachting.at

GREECE

Aegean Electronics SA
4 Zosimadon Street
185 31 Piraeus
Tel: +302 10 413 7269

ICELAND

Fridrik A. Jonsson HF
Akralind 2
210 Kopavogur
Tel: +354 552 2111

ISRAEL

P. Fischeles Ltd
P.O. Box 33673
31336 Haifa
Tel: +972 4 841 9379

ITALY

Navico Italia Srl
Via Benadir 14
20132 Milan
Tel: +39 02 2614 9517
www.simrad-yachting.it

LEBANON & SYRIA

Selcom Marine Sarl
P.O. Box 55541
Dekwaneh Main Street
Beirut
Tel: +961 149 1489

MALTA

Medcomms Ltd
4 Msida Road
Gzira GZR03
Tel: +356 21 335521

MAURITANIA

Electronaval
Port Autonome du Nouadhibou
Nouadhibou
Tel: +222 574 7013

MOROCCO

Soremar
17 Rue Le Catelet
Edif. Emilie, Zola
21900 Casablanca
Tel: +212 2240 5050

NORWAY

Navico Norway AS
Bygg 24, Nedre Veg 8
3183 Horten
Tel: + 47 67 12 64 00
www.simrad-yachting.no

POLAND

Parker Poland Sp.z o.o.
Cz. stków Polski 171
05-152 Czosnów
Tel: +48 22 785 11 11

PORTUGAL

Nautel - Sistemas Electronics Lda.
Rua Fernando Mendes Pinto 46
1400-146 Lisboa
Tel: +351 21 300 70 30

ROMANIA

Navtron Srl
Vasile Marcovici Str. nr. 7
9100130 Constanta
Tel: +40 241 545 650

RUSSIA

Simbia Engineering Company Ltd
4A Verhneozernaya Str.
236018 Kaliningrad
Tel: +7 0112 215492

SOUTH AFRICA

Marine Radio Acoustic Devices
P.O. Box 12076
N1 City 7463 Cape Town
Tel: +27 21 559 4003

SPAIN

Navico Marine Electronics S.L.
Pol. Ind. Finestrat nave 14
Avda. Pais Valencia 28
03509 Finestrat (Alicante)
Tel: +34 902 350 750
www.simrad-yachting.es

SWEDEN

Navpoint AB
Energigatan 17
434 37 Kungsbacka
Tel: +46 300 566 340

SWITZERLAND

Marine Parts Technics AG
In der Au 5
8406 Winterthur
Tel: +41 52 203 66 55

TUNISIA

Mediterranee Services
Résidence Du Lac Bloc D, no 11
1053 Les Berges Du Lac
Tel: +216 71 86 02 01

TURKEY

Promar Deniz Malzemeleri Dis
Tic Ve Mum. Ltd. Sti.
Postahane mah.
Derinsu sok. No: 8
Tuzla, Istanbul
Tel: +90 216 395 26 52

UNITED ARAB EMIRATES

Emphor FZCO
P.O. Box 61232
Jebel Ali Free Zone
Dubai
Tel: +97 148 830 233

UNITED KINGDOM & IRELAND

Navico UK Ltd
Premier Way, Abbey Park,
Romsey, Hampshire SO51 9DH
Tel: +44 (0) 1794 510010
www.simrad-yachting.co.uk

ASIA PACIFIC

AUSTRALIA

Navico Australia Pty. Ltd
Unit 5, 12 Mars Rd, Lane Cove
NS W 2066
NSW 2111
Tel: +02 9936 1000
www.simrad-yachting.com.au

CHINA & HONG KONG

CITE Limited
Room C-E, 16/F, Yan's Tower,
26-27 Wong Chuk Hang Road
Aberdeen, Hong Kong
Tel: +852 2552 0178

Peaceful Marine Electronics
Co., Ltd
Flat F, 14/F, Co-Tack Industrial
Building, No.17 Kin Fat Street
Hong Kong
Tel: +852 2385 3282

Geo Marine Technology Ltd
MX Series
Room 1019
New Commerce Center
19 On Sum Street, Shatin N.T.
Hong Kong
Tel: +852 2635 2127

INDIA

Elektronik Lab
R/13 Navroz Baug
Lalbaug
Mumbai 400012
Tel: +91 2224 71 5115

JAPAN

JIM Quartz Corporation
2-65-7, Akabane, Kita-Ku
115-0045 Tokyo
Tel: +81 3 39033988

NEW CALEDONIA

Altomarine S.A.R.L.
ZT Nouville Plaisance
9 Rue Capitaine BOIS
BP 14348
98846 Noumea
Tel: +687 259612

NEW ZEALAND

Advance Trident Ltd
383 New North Road
Kingsland, P.O. Box 4174
Auckland
Tel: +64 9 845 5347
www.simrad-yachting.co.nz

PHILIPPINES

Norwegian Marine
Consultancy Inc
Bldg. 1, Cebu yacht Club
Pusok, Lapu Lapu City 6015
Tel: +63 32 34 00 292

SINGAPORE & MALAYSIA

Jason Electronics Pte Ltd
Blk 194 Pandan Loop #06-05
Pantech Industrial Complex
128383 Singapore
Tel: +65 6 872 0211

SRI LANKA

International Marine Services
Pvt Ltd
420/23B1, Welipara
Thalawathugoda
Tel: +94 602 178 344

SOUTH KOREA

Turn-On Electronics Co. Ltd.
7th FL, Dong-A Ilbo Bldg,
53-11, 4-KA, Choongang-Dong
Choong-Ku, Busan
Tel: +82 51 4623930

TAHITI – FRENCH POLYNESIA

Nautisport
Fare Ute, Papeete
98713 Papeete
Tel: +689 50 59 59

TAIWAN

Dragon & Elephant Enterprise
Co. Ltd, 12F-4, No. 251, Min
Chuan 1st Road, Kaohsiung
Taiwan ROC
Tel: +886 722 72887

THAILAND

Electrical Marine Co.Ltd
20-9-10 Moo 2,
Thepkrasattri Road
Koh Kaew, Muang,
Phuket 83000
Tel: +66 76 239112

AMERICAS

ARGENTINA

R.C. International
Av. Corrientes 2958, Piso 11
Of. 38
(1193) Buenos Aires
Tel: +54 11 4862 5774

BRAZIL

Electra Service
Av. Eugenio Fisher, 300 CING
Pier 26, Guarujá
11410-971 Sao Paulo
Tel: +55 3354 3599

CHILE

Robinson Marine Electronics S.A.
Avda. Vitacura 3568 Of. 502
Casilla 19012, Correo 19
Vitacura
Santiago
Tel: +56 2 207 3059

ECUADOR

Electrónica Inteligente del
Ecuador S.A.
San Martin 301A y Chile
Oficina No. 6
Guayaquil
Tel: 593 4 240 2839

HONDURAS

Lagoon Marina
Nana Cruz Villa Esther
34301 LA Ceiba – Atlantida
Tel: +504 440 0614

MEXICO

Marine Elec. Serv & Repair S.A.
Marquez Deleon 1850
23040 La Paz, BCS
Tel: +52 612 127 1121

Grupo Samadhi S.A. De C.V.
Aptdo. Postal 455
23000 La Paz
Tel: +52 612 165 5284

Elenaval
Escalerillas 402
Fracc. El Mirador
60010 Uruapan, Michoacan
Tel: +52 452 523 3766

Industrias Nauticas
Belisario Doinquez 216
22840 Ensenada
Baja California
Tel: +52 646 176 1065

Industrial Maritima de Veracruz
S.A. de C.V.
Gonzalez Pages 881
Centro Veracruz
Veracruz 91700
Tel: +52 29 932 8547

Brunetti Engineering
Popa y Quilla S/N, Depto. 1102
48335 Puerto Vallarta
Tel: 954-636-6140

PANAMA

Protecsa
P.O. Box 0815-00680
Zone 4-Panama
Tel: +507 227 3533

Yatch Services Inc.
P.O. Box 0819-07270
Panama City
Tel: +507 314 1830

Navstar Marine Electronic, S.A
Williamson Place 0752 B
La Boca
Ancon
Tel: +507 228 0399

PERU

Robinson Marine Electronics S.A.
Avda. Los Topacios 266
Urb. San Antonio Bellavista
Callao
Tel: +51 1 453 6997

URUGUAY

Electromaritima Uruguaya Ltda.
Guatemala 1260
11800 Montevideo
Tel: +598 2 924 7789

USA/CANADA

Navico
30 Sudbury Road
01720 Acton, MA
Tel: +1 978 889 6600

VENEZUELA

CHK Importadora Industrial
P.O. Box 80175
1080A Caracas
Tel: +58 212 977 0927

MORE INFO

Further details see
www.simrad-yachting.com/distributors

SIMRAD

www.simrad-yachting.com