

Nasa Marine Geräte Log/Echolot/Wind

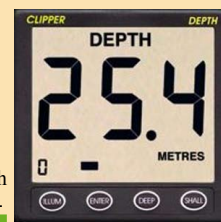
Clipper Depth System

If you are looking for cockpit instruments that feature cutting edge technology yet are intuitively simple to operate, look no further. The outstanding Clipper range of instruments incorporate technically advanced electronics in an industry standard 110mm square case. Ease of use and display clarity were top of the design brief. All Clipper instruments have giant digits and multilevel backlighting. As with all Nasa instruments - they are excellent value too.

Technical Specifications • 40mm high digits • Depth below transducer / below keel / below surface • Deep and shallow alarms (audible and visual) • User selectable Feet or Metres. • Intelligent gain control + manual override • Selectable display rate and depth averaging rate • Depth trend indicator • No echo indicator • High transmit power • All settings stored in non volatile memory • Tactile keypad • Complete with weather cover and transducer • Consumption 20mA + 25Ma for backlight (max)



110025 Clipper Echolot 129,99 €



Clipper Depth Repeater

If you are looking for cockpit instruments that feature cutting edge technology yet are intuitively simple to operate, look no further. The outstanding Clipper range of instruments incorporate technically advanced electronics in an industry standard 110mm square case. Ease of use and display clarity were top of the design brief. All Clipper instruments have giant digits and multilevel backlighting. As with all Nasa instruments - they are excellent value too.

Technical Specifications • 40mm high digits • Depth below transducer / below keel / below surface • Deep and shallow alarms (audible and visual) • User selectable Feet or Metres. • Intelligent gain control + manual override • Selectable display rate and depth averaging rate • Depth trend indicator • No echo indicator • High transmit power • All settings stored in non volatile memory • Tactile keypad • Complete with weather cover and transducer • Consumption 20mA + 25Ma for backlight (max)

Clipper Easylog (kein Bewegliches Rad mehr !!!)

NEW - The Log without a paddwheel and no moving parts

The Clipper EASYLOG shows speed, trip and total distance on a high visibility liquid crystal display. It utilises the RMC sentence from any GPS or plotter with an NMEA 0183 output. Alternatively the EASYLOG can repeat, using sentences VHW and VLW from an existing NMEA log.

Technical Specifications • 40mm high characters • Industry standard 110mm square case • Speed in Knots with 0.1 knot resolution • Trip in N.Miles with 0.1 N.Mile resolution • Total log up to 9999 N.Miles • 20 levels of backlighting • Tactile keypad • Speed trend indicator • Current consumption 1.5mA at 12V (10mA with backlight) • Opto isolated balanced NMEA input



120542 Clipper Echolot Repeater 119,99 €



Clipper Log Repeater

If you are looking for cockpit instruments that feature cutting edge technology yet are intuitively simple to operate, look no further. The outstanding Clipper range of instruments incorporate technically advanced electronics in an industry standard 110mm square case. Ease of use and display clarity were top of the design brief. All Clipper instruments have giant digits and multilevel backlighting. As with all Nasa instruments - they are excellent value too.

Technical Specifications • 40mm high digits • Speed (Knots/m.p.h.) • Trip Distance (N.Miles / Miles) • Total Distance (N.Miles / Miles) • Trend indicator shows acceleration / deceleration • Selectable speed averaging • Tactile keypad • Complete with weather cover and paddle-wheel unit

111931 Log 159,99 €

110030 Clipper Log 119,99 €

Clipper Duet System

Best selling combined Speed/Distance Log and Echo Sounder in standard 110mm square size. Suitable for open cockpit mounting.

As with all Nasa instruments - it is excellent value too.

Technical Specifications • Depth Sounder in feet and metres. • Shallow Alarm and Keel Offset. • Complete with well proven Transducers. • Speed in MPH, Knots and Km/H. • Trip and Total Distance in Miles, Nautical Miles and Kilometres. • Speed Limit Alarm



110031 Duet 189,99 €



Clipper Wind System

The Clipper Wind system shares the same 110mm square case as its sister instruments in the Clipper range. the display is exceptionally large and clear, with 60 segments for full 360 degree direction indication. Windspeed is shown in knots, M.P.H. or Metres/second. The pointer style is selectable, from the single segment shown above, to multi segments for greater clarity or a 'windex' style indicator. The Masthead unit is well proven and supplied with 20 metres of cable as standard

Technical Specifications • Supply voltage Nominal 12v DC • Consumption, 50mA+ (25mA for display illumination max) • Keypad adjustment of masthead alignment • 7 levels of display backlighting • Display case size 110 x 110mm • Depth behind panel 30mm • Anemometer head 210 x 140mm • 5 and 20 metre Extension cables available

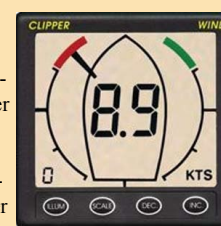
Wind 249,90 €

Clipper Wind Repeater

The Clipper Wind system shares the same 110mm square case as its sister instruments in the Clipper range. the display is exceptionally large and clear, with 60 segments for full 360 degree direction indication. Windspeed is shown in knots, M.P.H. or Metres/second. The pointer style is selectable, from the single segment shown above, to multi segments for greater clarity or a 'windex' style indicator. The Masthead unit is well proven and supplied with 20 metres of cable as standard

Technical Specifications • Supply voltage Nominal 12v DC • Consumption, 50mA+ (25mA for display illumination max) • Keypad adjustment of masthead alignment • 7 levels of display backlighting • Display case size 110 x 110mm • Depth behind panel 30mm • Anemometer head 210 x 140mm • 5 and 20 metre Extension cables available

Clipper Wind 119,90 EUR



Clipper Close Haul Repeater

This connects directly to the master wind unit. As well as repeating the wind speed it shows wind direction in high resolution when sailing close to - or running with the wind. Complete with 5M cable.

Clipper Compass System / Compass Repeater

The Clipper Compass is a fully electronic compass with remote fluxgate sensor. The large clear display has 7 levels of illumination and gives True or magnetic heading. The sensor which is gimballed for plus/minus 45 degrees of pitch and roll, is mounted in a position where stray magnetic fields are at a minimum. An electronic auto calibration then cancels out small errors. Steer to course function When the steering function is selected a series of chevrons accumulate showing the magnitude and direction of the steering error. To stay on course simply turn the wheel in the direction of the chevrons until they are extinguished. The steering sensitivity can be preset by the user. An off course alarm provides a safety feature when not at the helm. If the heading deviates by more than a preset amount then the alarm will sound.

Technical Specifications • Supply voltage Nominal 12v DC • Consumption, 120mA+ (25mA for display illumination max) • Fluxgate accuracy +/- 1 degree • Adjustable Damping • 1 degree display resolution • Display case size 110 x 110mm • Depth behind panel 30mm • Fluxgate 175mm diameter x 95mm • sensor supplied with 5 metres of cable • Extension cables available

Compass 279,00 EUR/Clipper Repeater 119,90 EUR

